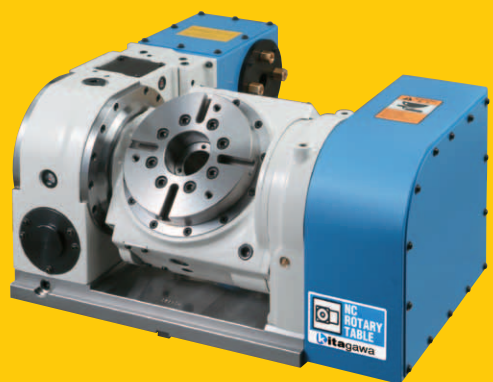


FANUC
ROBODRILL
ROBOCUT

kitagawa



NC ROTARY TABLE





NC ROTARY TABLE

NC Rotary Table Features

Kitagawa offers wide variety of NC rotary tables to meet your specific needs for machining type and purpose. Kitagawa's NC rotary tables provided with powerful clamping force and highly precise indexing capability may be equipped in combination with a chuck.

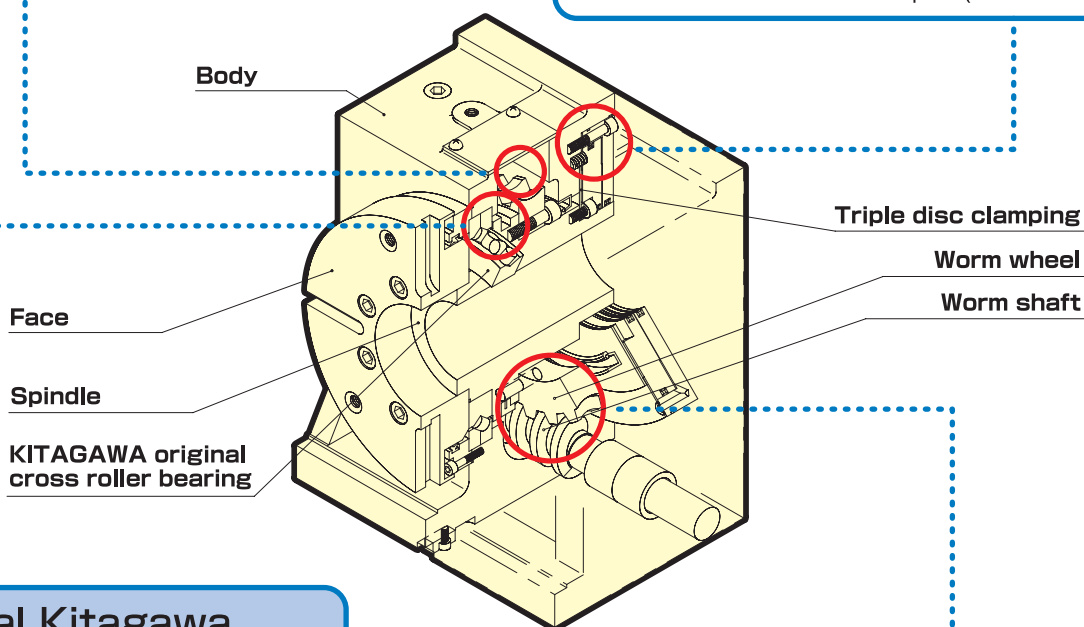
Special material to eliminate worm wheel wear

Kitagawa's special material contains hard inter-metallic compounds to give improved wear characteristics over conventional models.

High clamping brake system

- **Air-hydro high clamping system. (T·X series)**
Powerful clamping torque can be achieved within a compact design using integrated air-hydraulic booster.
- **Triple disc clamping system. (MR series)**
Triple disc brake system with 4 friction surfaces enables increased clamping torque when compared to conventional air clamped models.

Patented in Japan (No. 4328969)



Original Kitagawa cross roller bearing

KITAGAWA original cross roller bearing supports the main spindle. Construction of the original bearing has high rigidity compared with conventional types, and the original bearing allows the body design to be compact. With over 20 years experience using the original bearing the best pressurization is set meaning high accuracy and high rigidity.

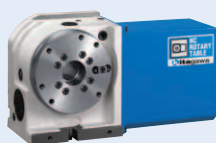
Large diameter gear with high teeth offering increased strength

Large diameter worm wheel and high gear teeth reduces the pressure on the teeth surfaces. This achieves high accuracy with reduced processing load and wear.

- **Double-lead worm shaft**
Double-lead worm shaft creates ideal contact between the worm shaft and worm wheel. This allows for simple backlash adjustment and high indexing accuracy.

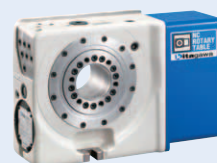
NC Rotary Table **MR Series**

A new clamping system provides powerful clamping, high-speed rotation, high precision, and compact design to realize best-in-class performance.



Ultra Compact NC Rotary Table **CK160**

CK160 (The world's thinnest body) enables to use full capacity of Fanuc RoboDrill without interference.



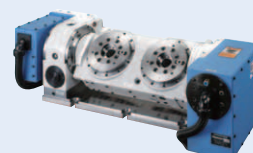
Tilting NC Rotary Table **TT Series**

Minimum-in-class compact design; inclined and allows five surface cutting.



Two-axis Tilting NC Rotary Table **TW2180**






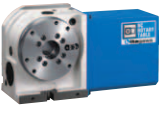





Blue High Performance
2-axis Tilting Type





NC Rotary Table Machine Compatibility

FANUC

Machine Type		ROBODRILL α-DiA series			ROBOCUT α-CiA series	
		α-D14SiA/D21SiA	α-D14MiA/D21MiA	α-D14LiA/D21LiA	α-C400iA	α-C600iA
						
MR 	120	⊙P5	○P10	○P16		
	160	⊙P5	⊙P11	○P16		
	200	○P6	⊙P11	⊙P17	—	—
	250	☎	○	○		
	320	—	☎	○		
CK 	160	⊙P4	○	○	—	—
TH(M)X 	160	⊙P7	⊙P12	○P17	—	—
	200	○P7	⊙P12	⊙P18		
TT 	101	⊙P3	○P8	○P14		
	140	○P3	○P8/P9	○P14/P15	—	—
	150	☎	⊙P9	⊙		
	182	☎	○P10	⊙P15		
TW 	2180	—	○P13	⊙P18	—	—
DM 	100	—	—	—	⊙P19	⊙P19

Note 1 Some of these above would be required High Column, so please check details in following detailed pages.

Note 2 The drawings shown are only reference. Please enquire separately for details and for particular specifications.

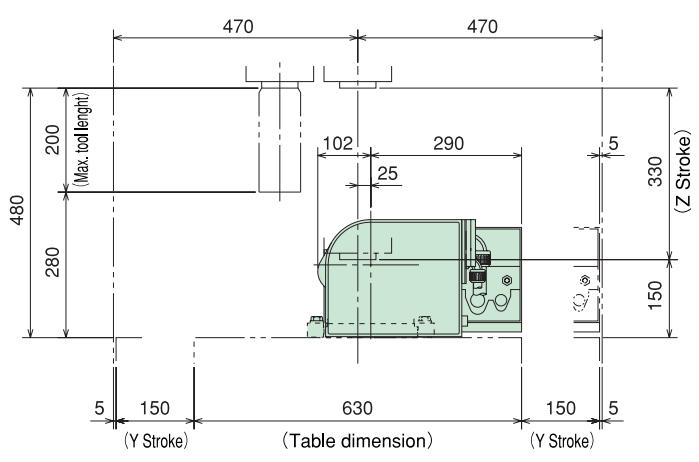
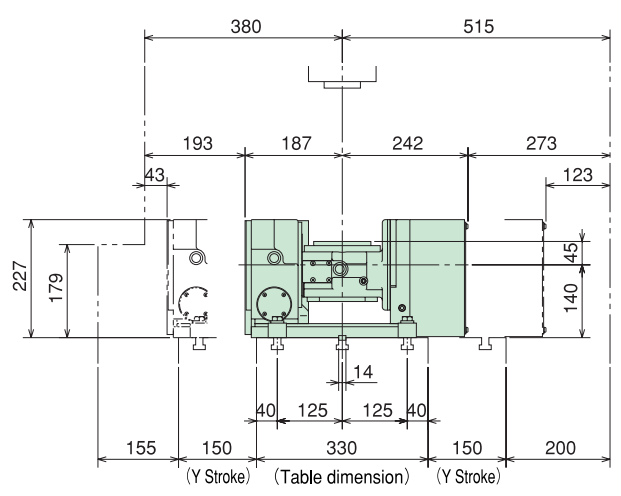
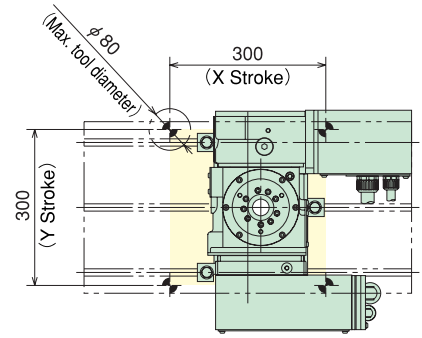
Note 3 Other than these above, check on the Kitagawa NC Rotary table catalogue or contact us.



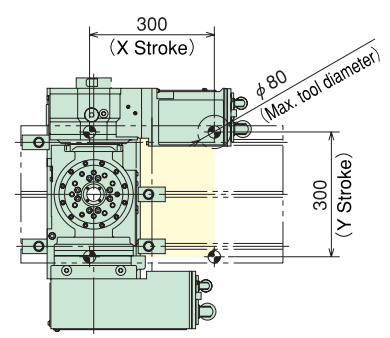
FANUC ROBODRILL α-D14SiA/D21SiA



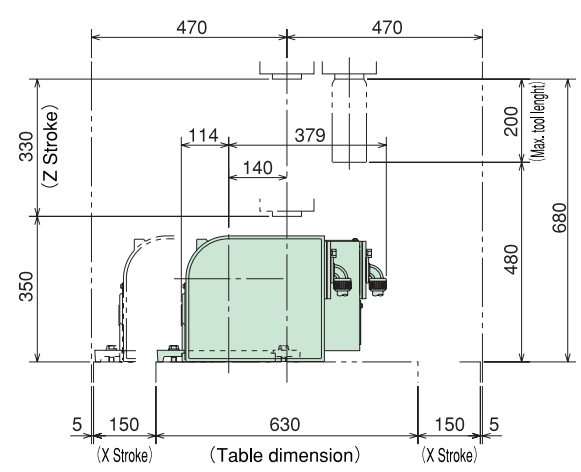
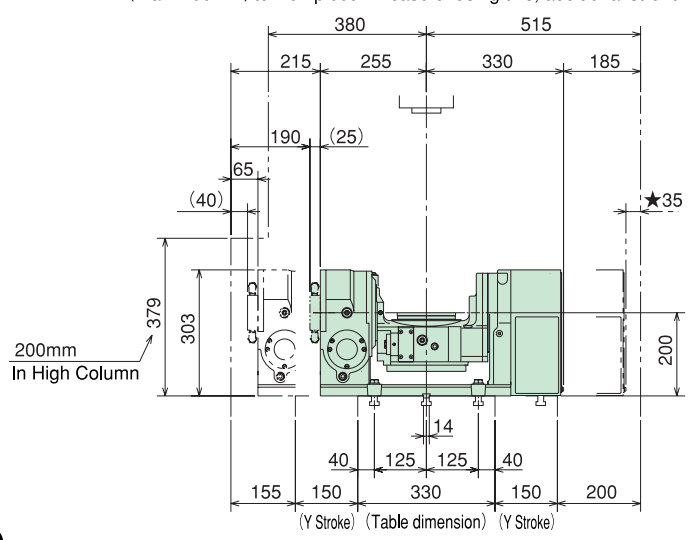
TT101AFF04



TT140AF01/TT140AFR01 【200mm High Column】

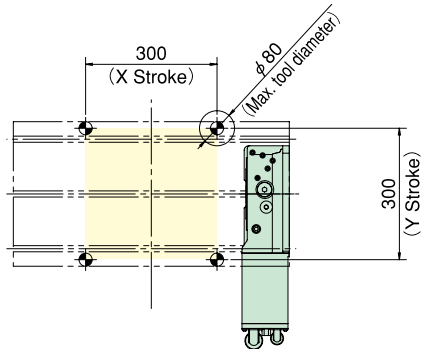


Caution) ★ marked dimensions don't consider the stroke which improve accessibility (Max. 100mm) to workpiece. In case of using this, additional stroke limit would be required.

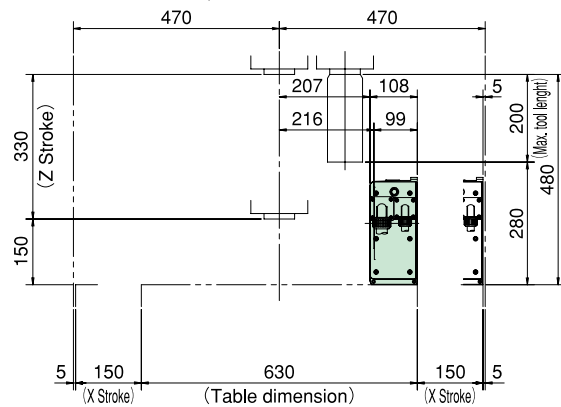
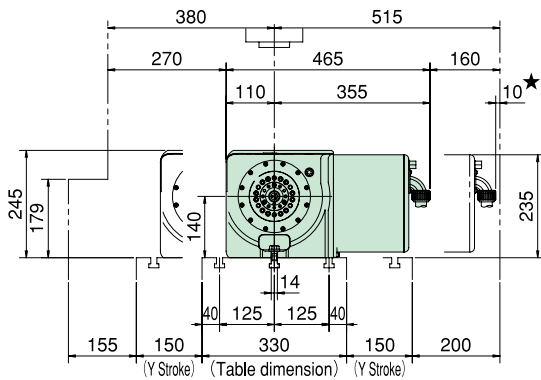


Dimensions in () show TT140AFRXX (Built-in Rotary Joint)

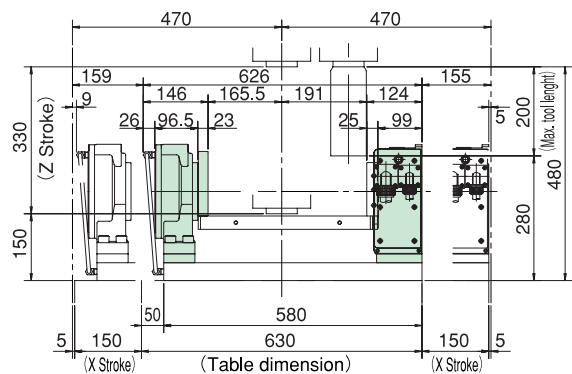
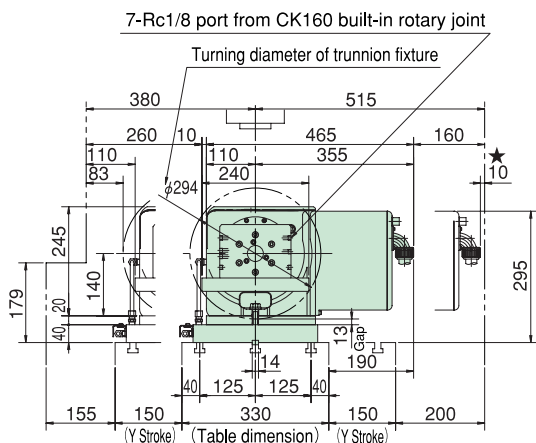
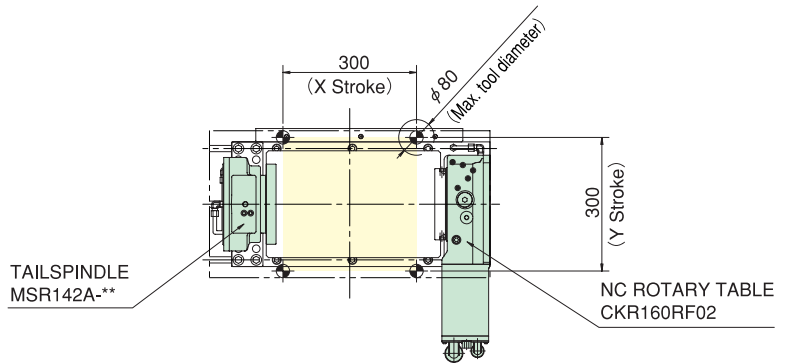
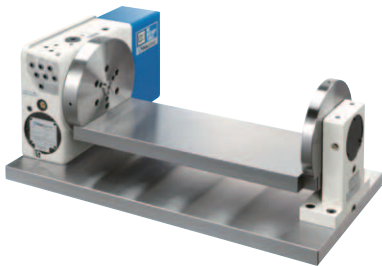
CKR160RF02/CK160RF02



Caution) ★ marked dimensions don't consider the stroke which improve accessibility (Max. 100mm) to workpiece. In case of using this, additional stroke limit would be required.



Sample Application



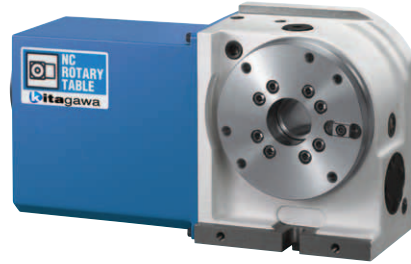
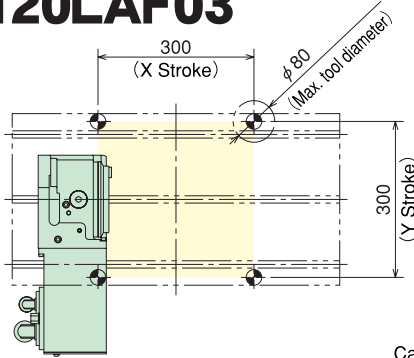
Caution) ★ marked dimensions don't consider the stroke which improve accessibility (Max. 100mm) to workpiece. In case of using this, additional stroke limit would be required.



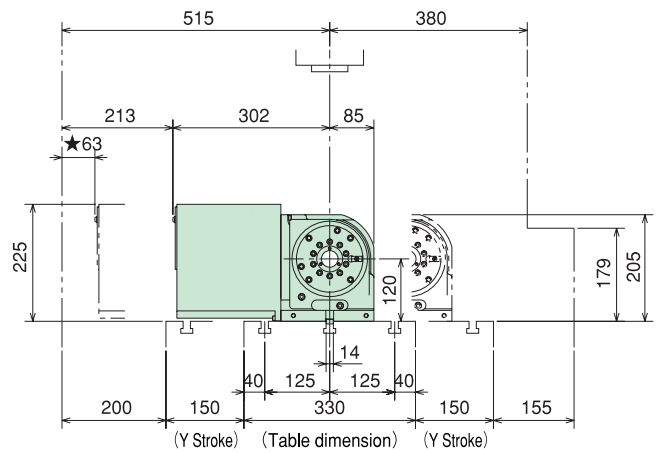
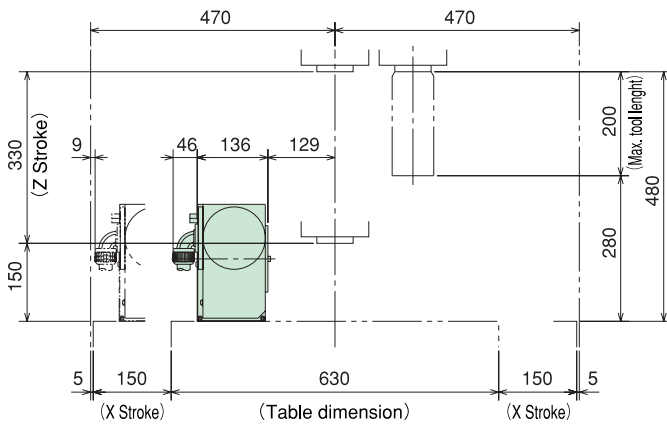
FANUC ROBODRILL α-D14SiA/D21SiA



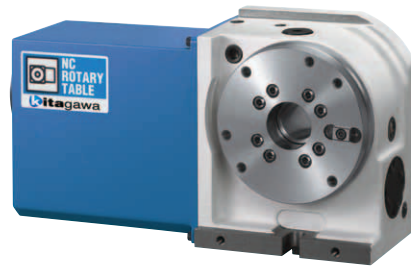
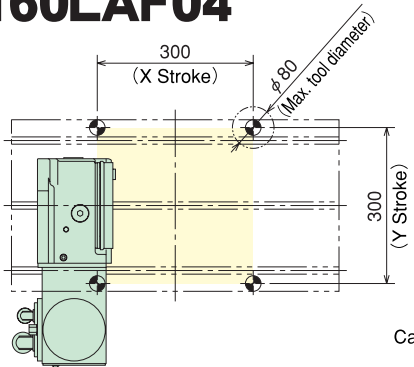
MR120LAF03



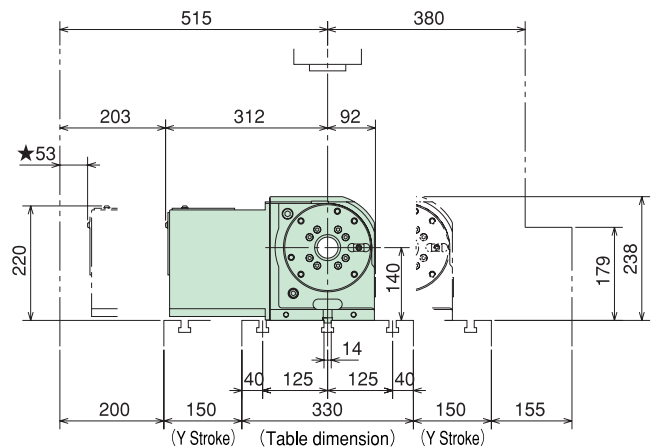
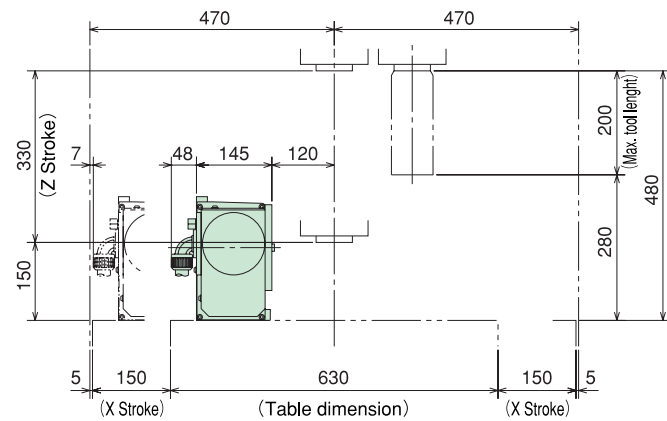
Caution) ★ marked dimensions don't consider the stroke which improve accessibility (Max. 100mm) to workpiece. In case of using this, additional stroke limit would be required.



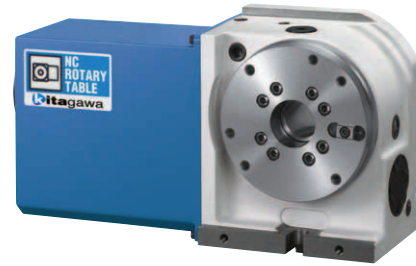
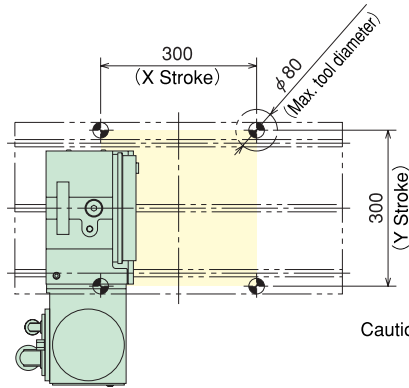
MR160LAF04



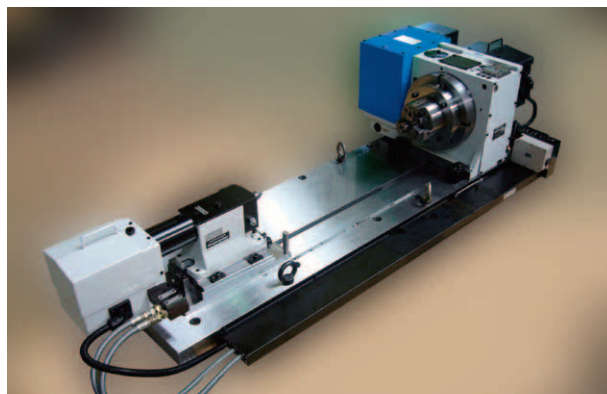
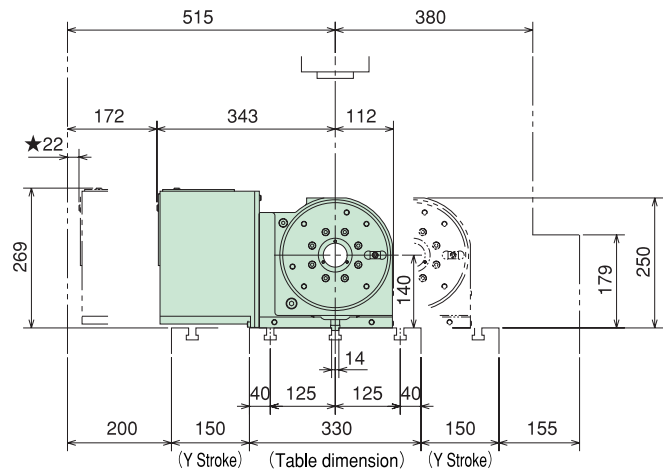
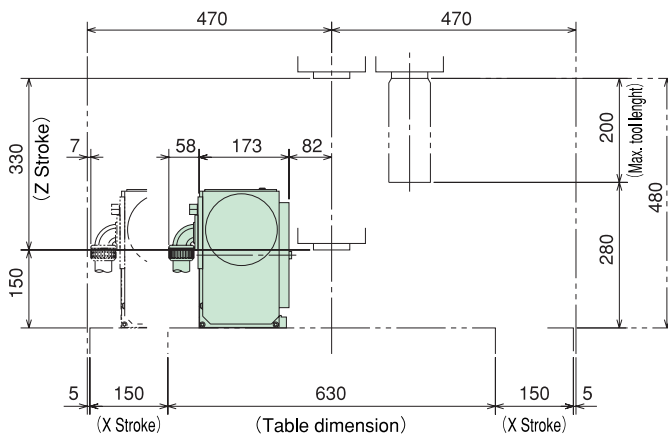
Caution) ★ marked dimensions don't consider the stroke which improve accessibility (Max. 100mm) to workpiece. In case of using this, additional stroke limit would be required.



MR200LAF01



Caution) ★ marked dimensions don't consider the stroke which improve accessibility (Max. 100mm) to workpiece. In case of using this, additional stroke limit would be required.

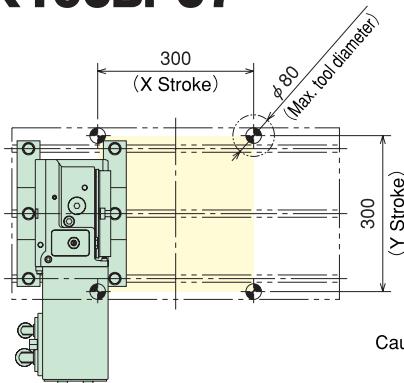




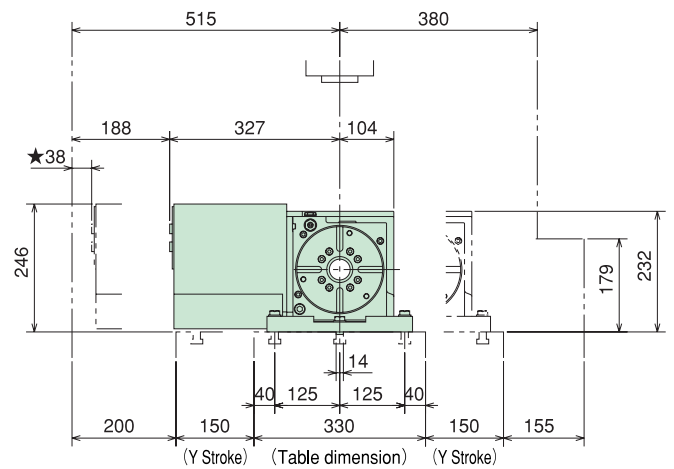
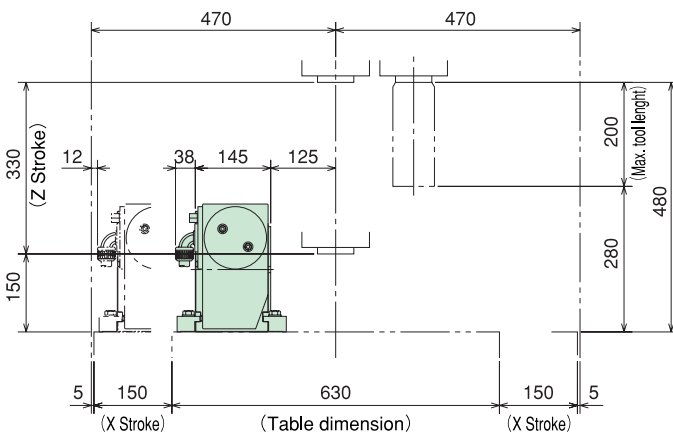
NC ROTARY TABLE

FANUC ROBODRILL α-D14SiA/D21SiA

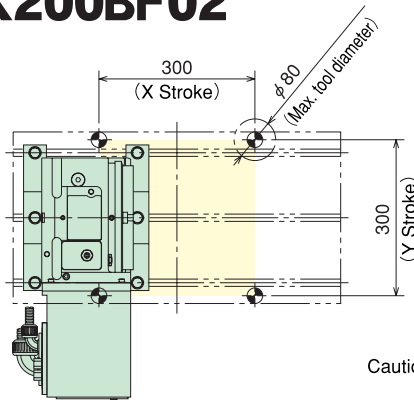
THX160BF07



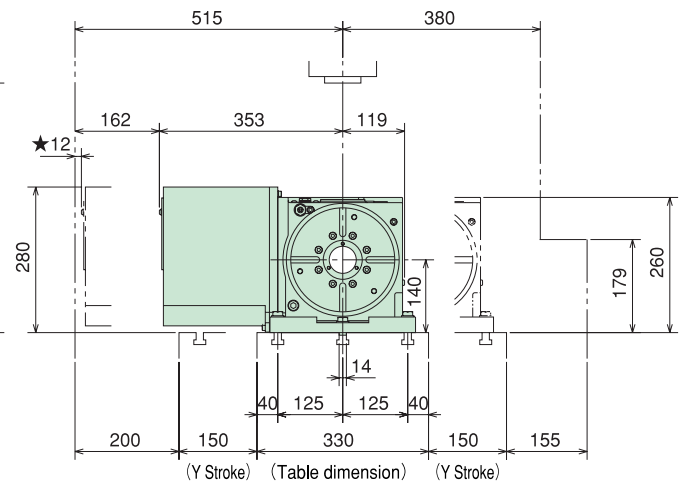
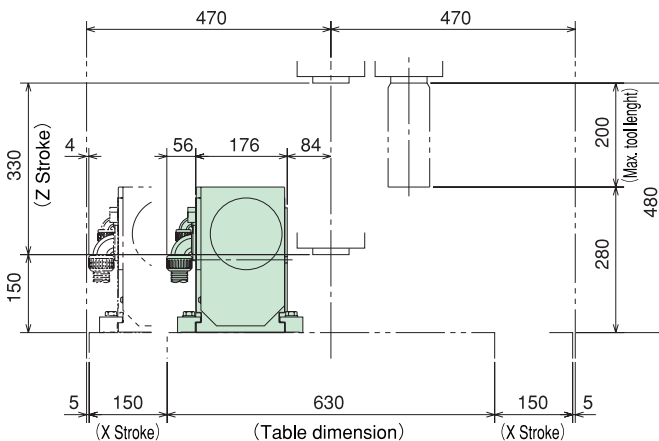
Caution ★ marked dimensions don't consider the stroke which improve accessibility (Max. 100mm) to workpiece. In case of using this, additional stroke limit would be required.



THX200BF02



Caution ★ marked dimensions don't consider the stroke which improve accessibility (Max. 100mm) to workpiece. In case of using this, additional stroke limit would be required.





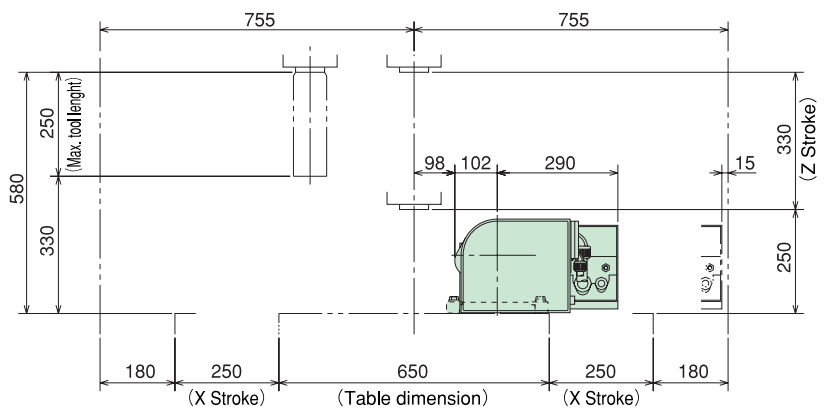
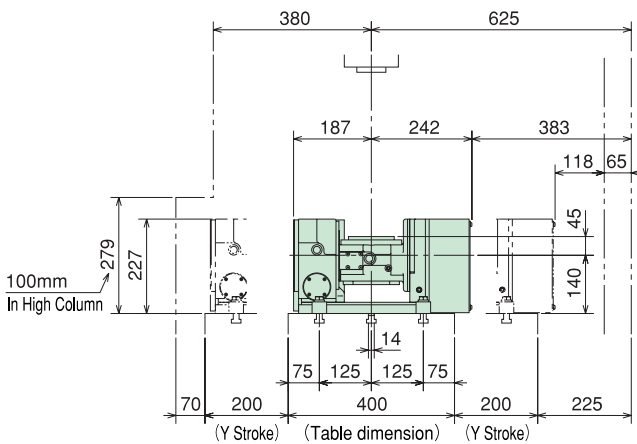
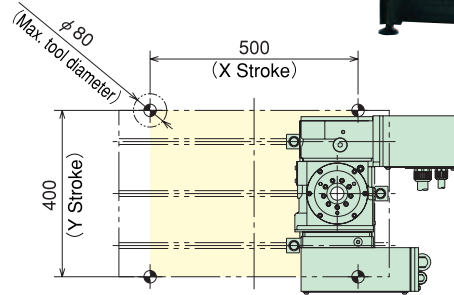
NC ROTARY TABLE

FANUC ROBODRILL α -D14MiA/D21MiA

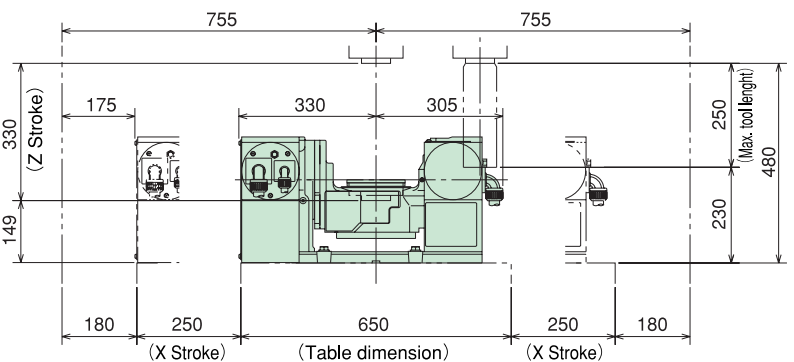
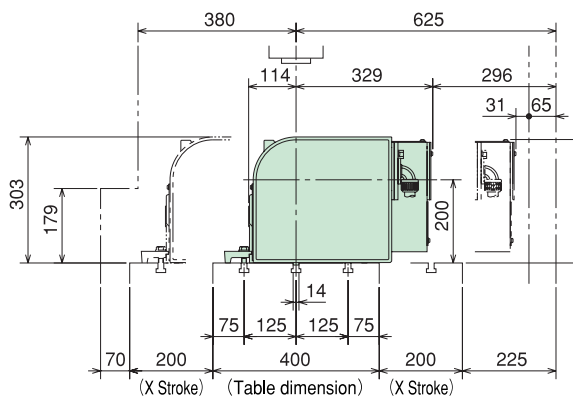
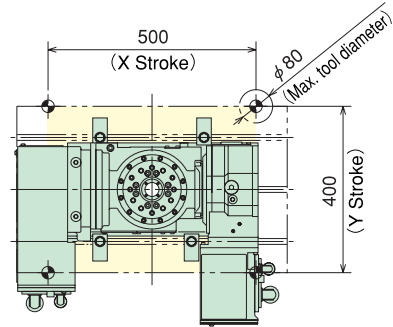


NC ROTARY TABLE

TT101AFF04 【100mm High Column】



TT140AF-01/TT140AFR01

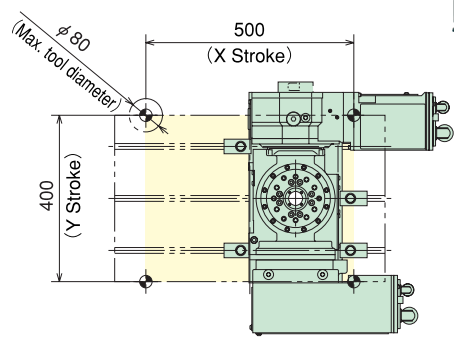




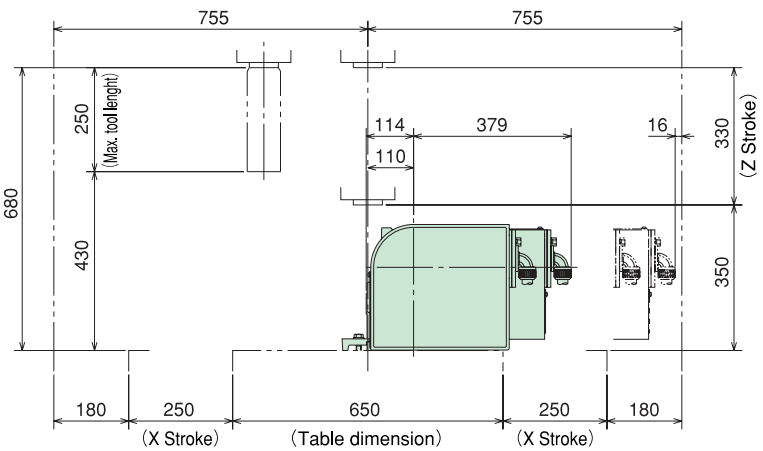
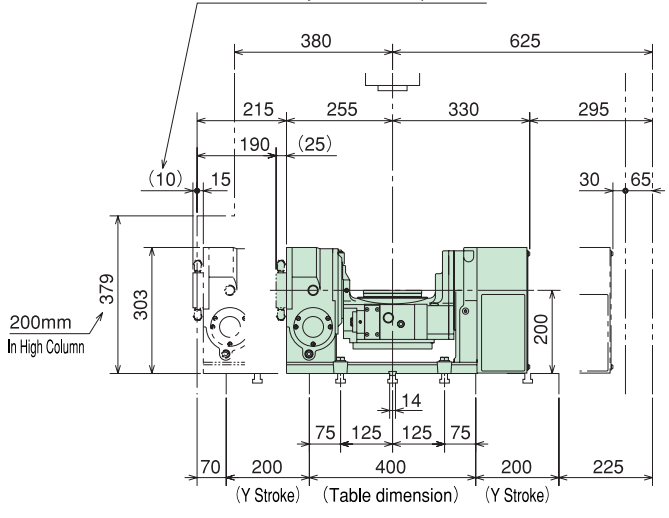
FANUC ROBODRILL α-D14MiA/D21MiA



TT140AF-01/TT140AFR-01 [200mm High Column]

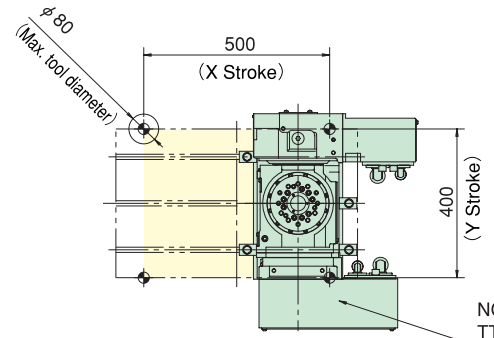


Stroke limit by 10mm is required.

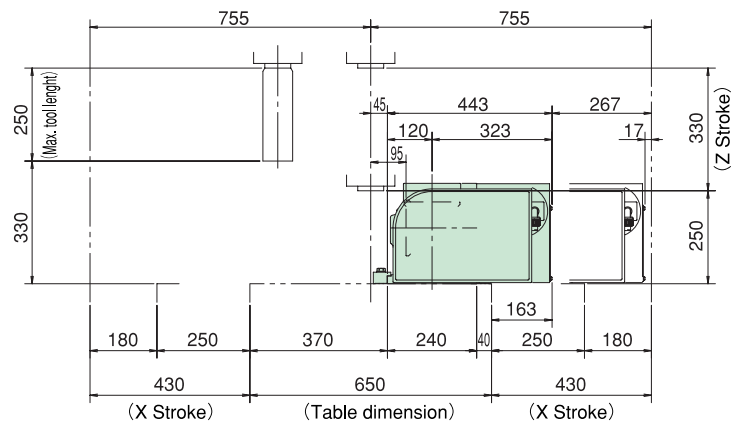
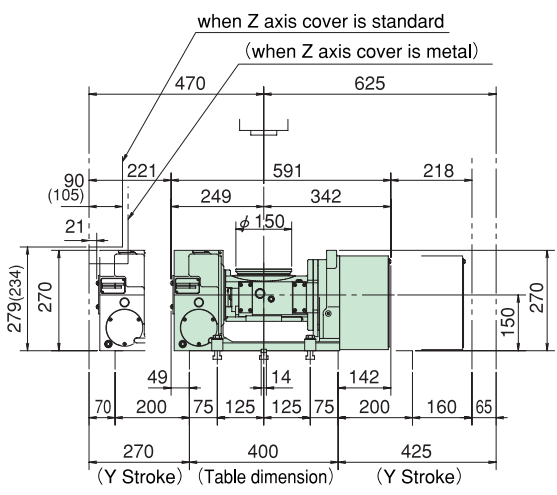


Dimensions in () show TT140AFR×× (Built-in Rotary Joint)

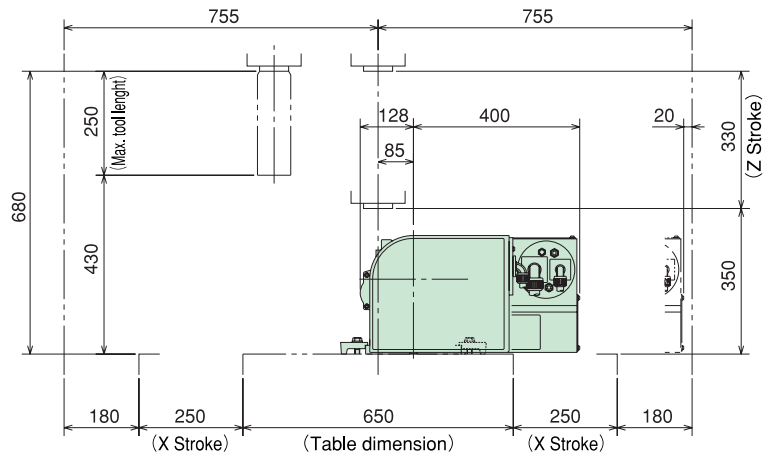
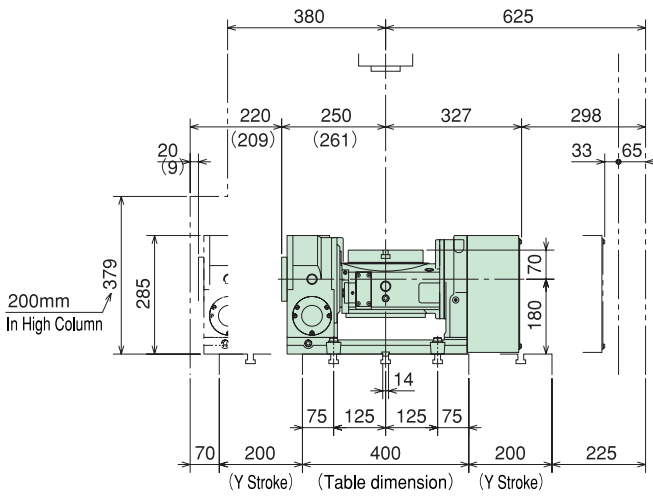
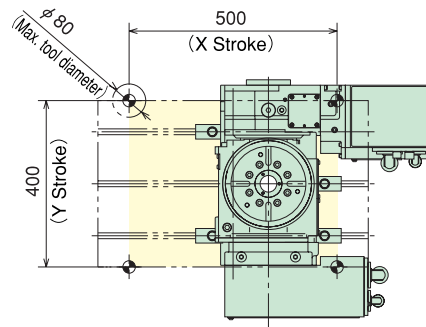
TT150AF-***



NC ROTARY TABLE
TT150AF-***

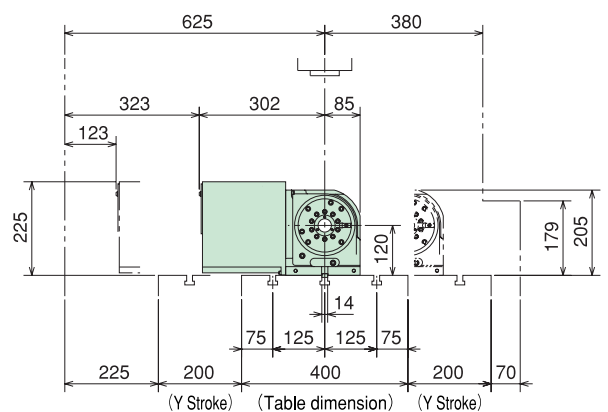
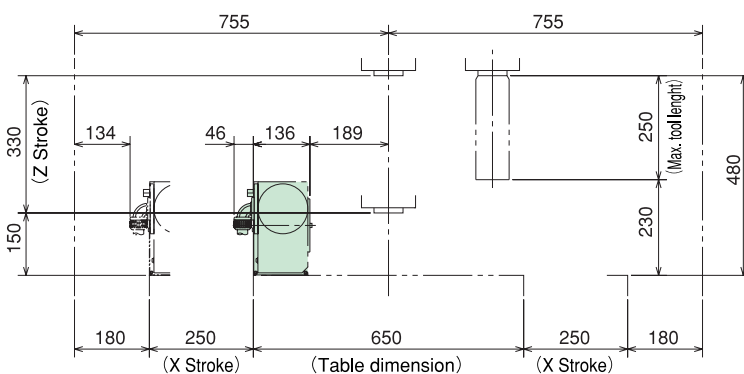
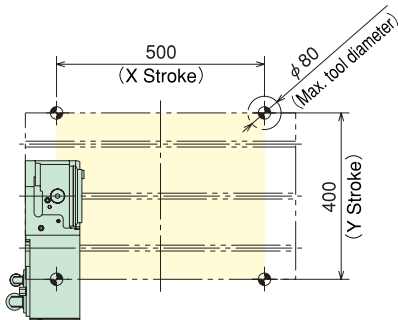


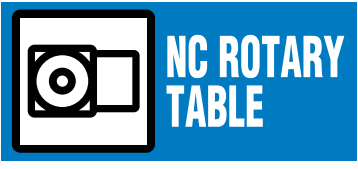
TT182BF01/TT182BFR01 【200mm High Column】



Dimensions in () show TT182BFR $\times\times$ (Built-in Rotary Joint)

MR120LAF03

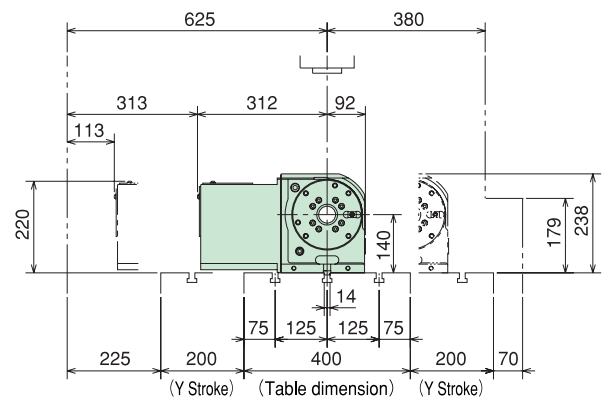
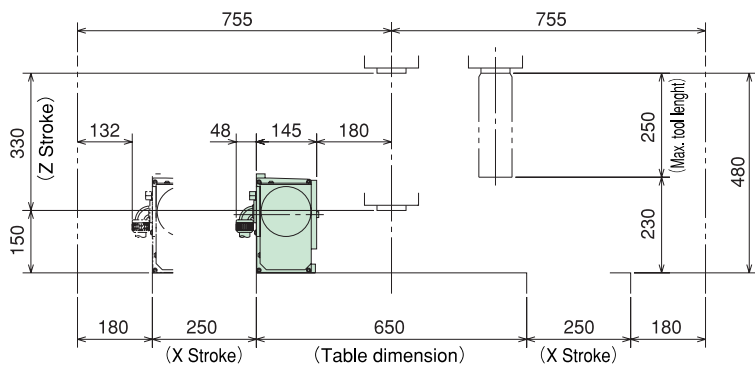
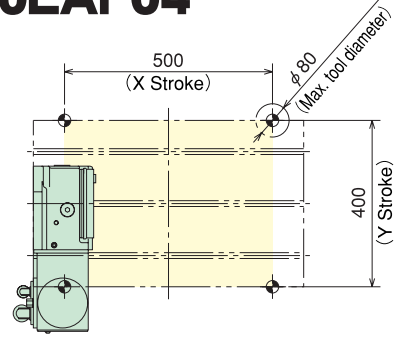




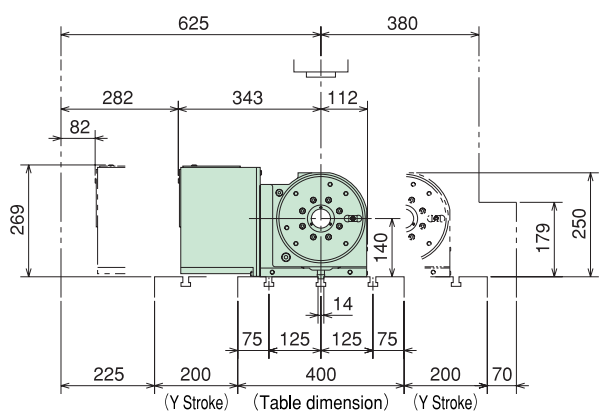
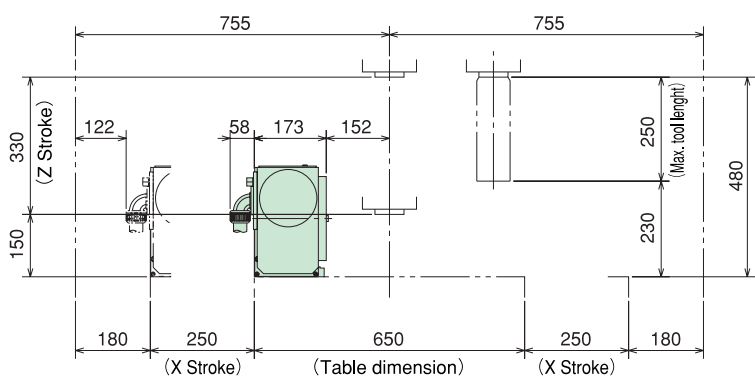
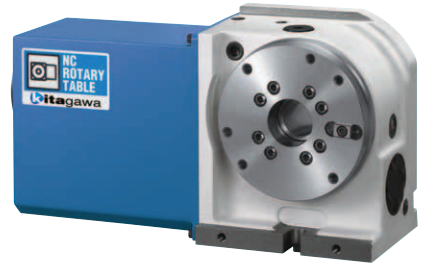
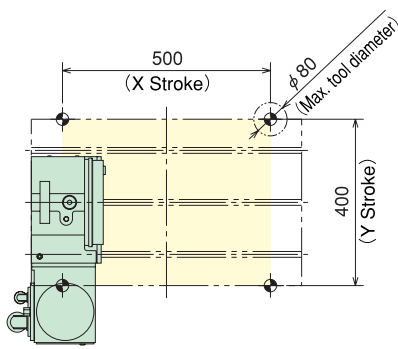
FANUC ROBODRILL α-D14MiA/D21MiA



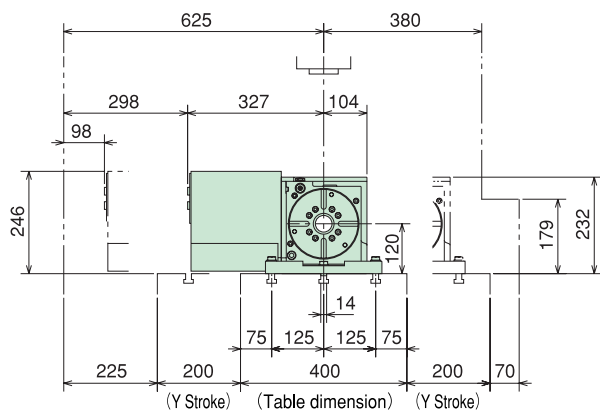
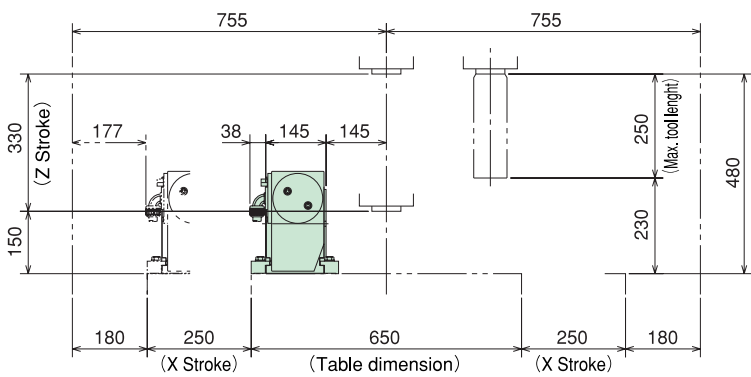
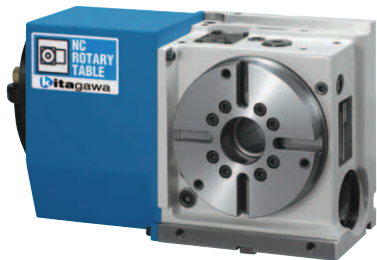
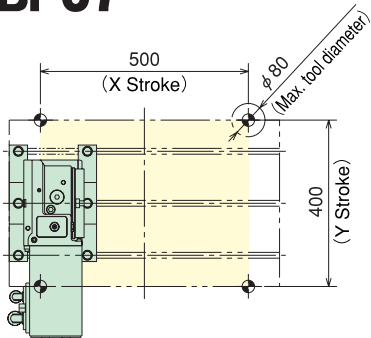
MR160LAF04



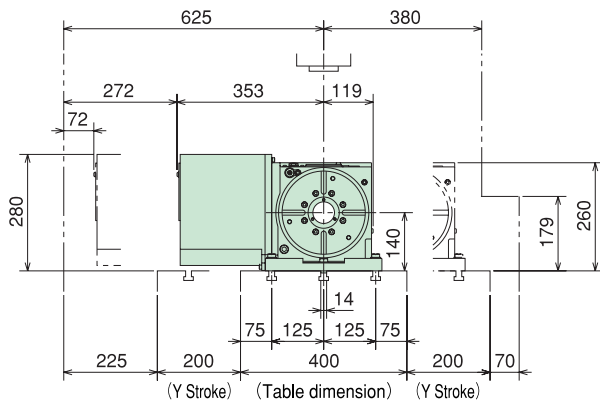
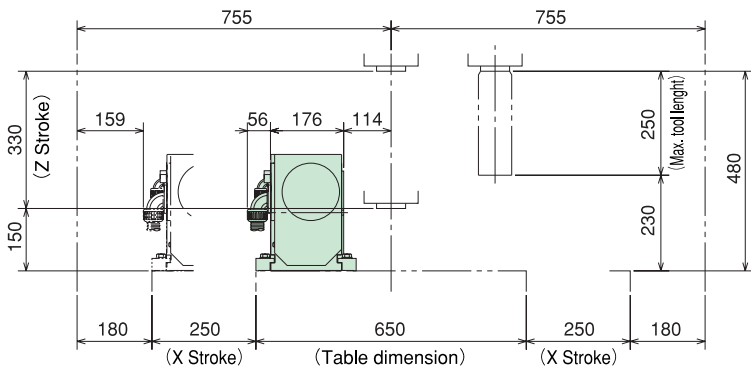
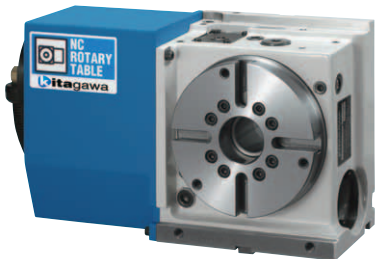
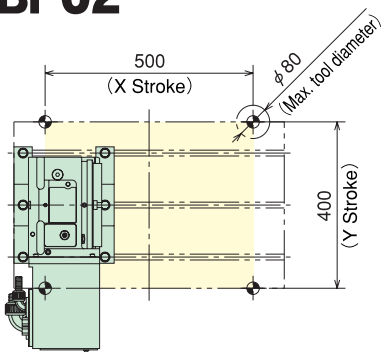
MR200LAF01

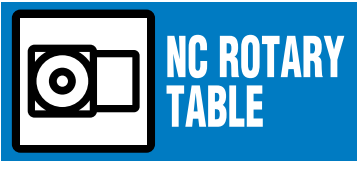


THX160BF07



THX200BF02

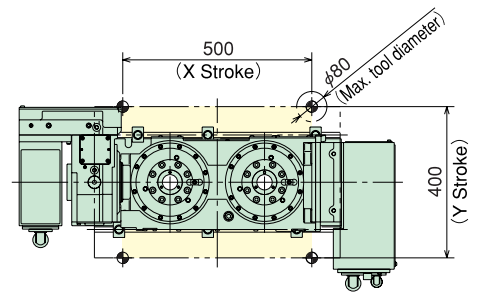
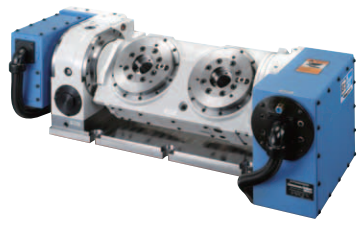




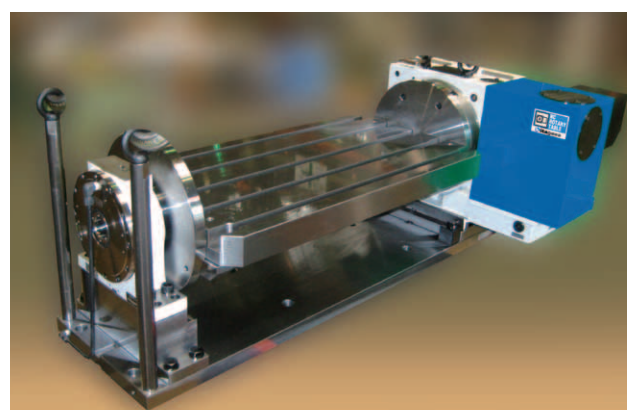
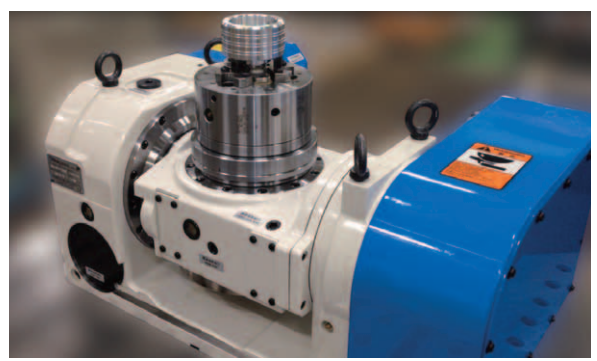
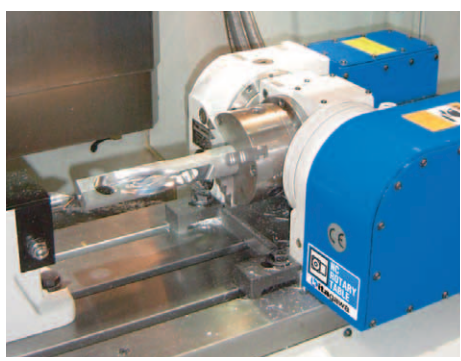
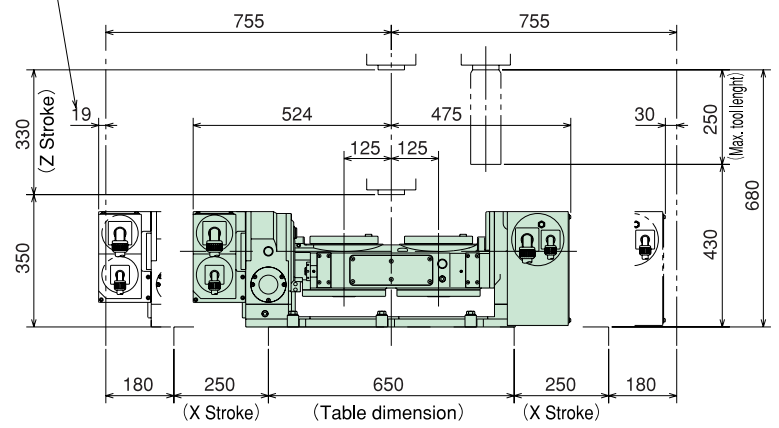
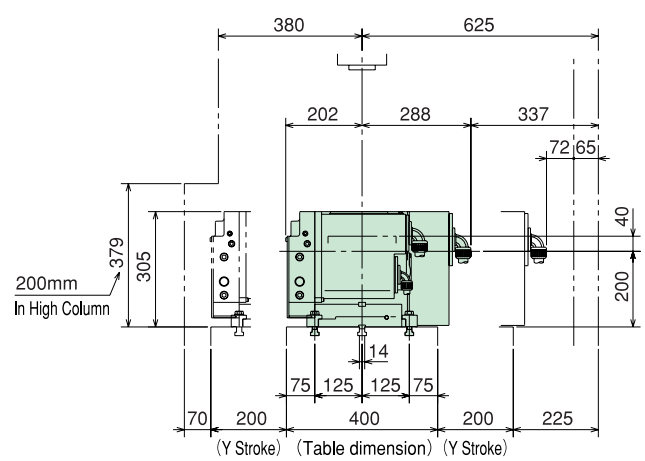
FANUC ROBODRILL α-D14MiA/D21MiA



TW2180B-F1/TW2180BRF1 【200mm High Column】



X axis stroke limitation would be required when moving with full stroke.





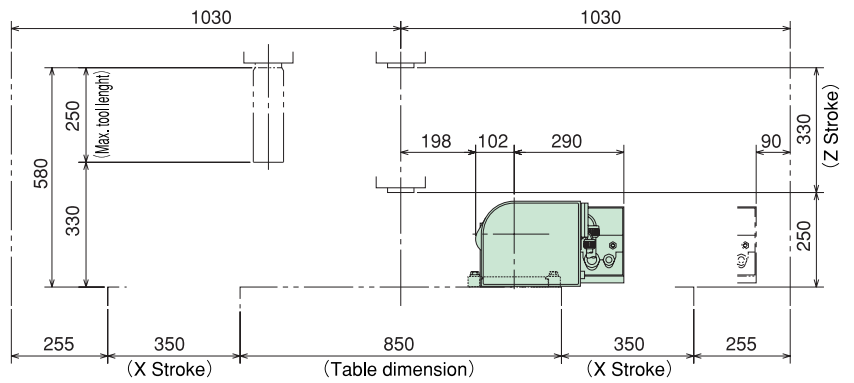
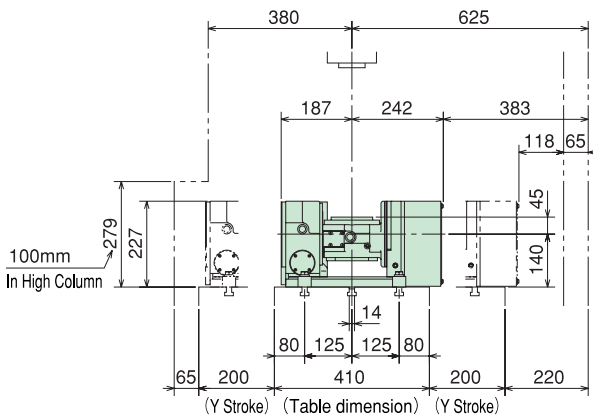
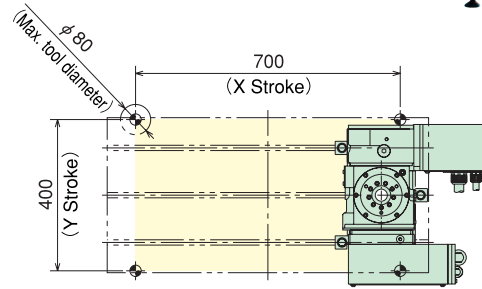
NC ROTARY TABLE

FANUC ROBODRILL α -D14LiA/D21LiA

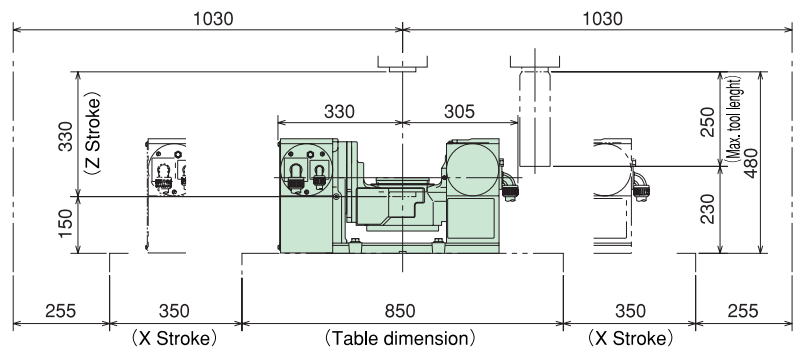
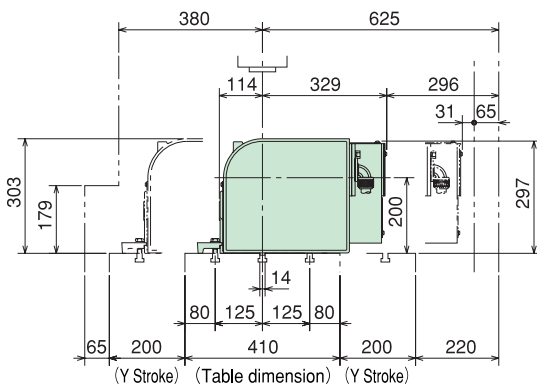
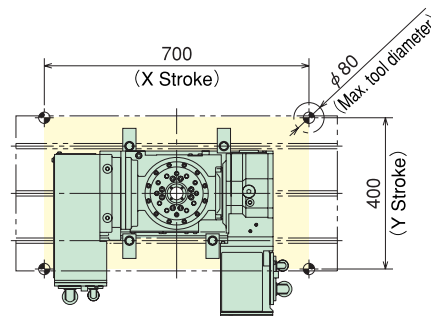


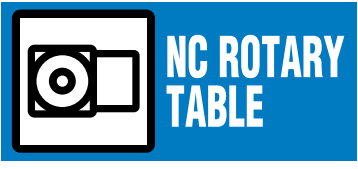
NC ROTARY TABLE

TT101AFF04 【100mm High Column】



TT140AF-01/TT140AFR01

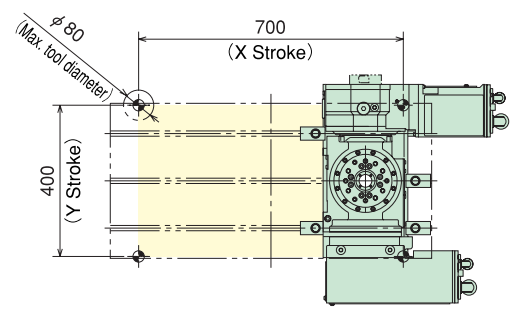




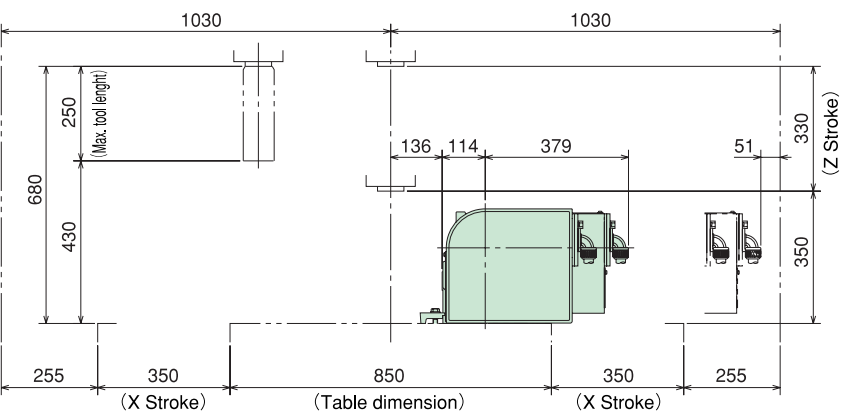
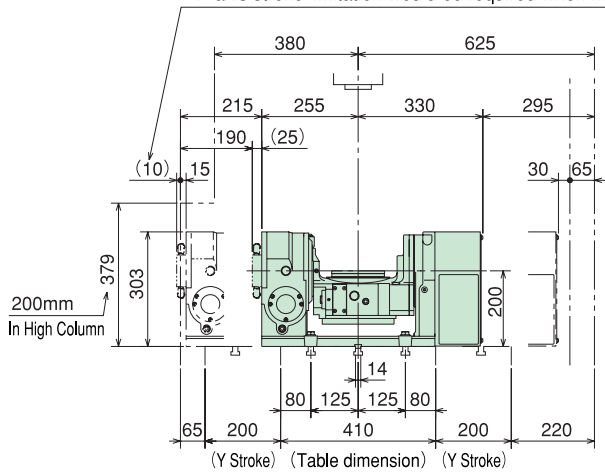
FANUC ROBODRILL α-D14LiA/D21LiA



TT140AF-01/TT140AFR01 【200mm High Column】

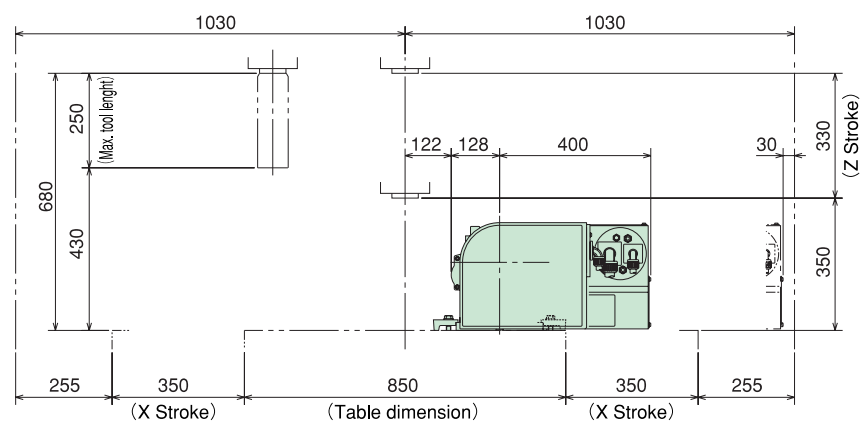
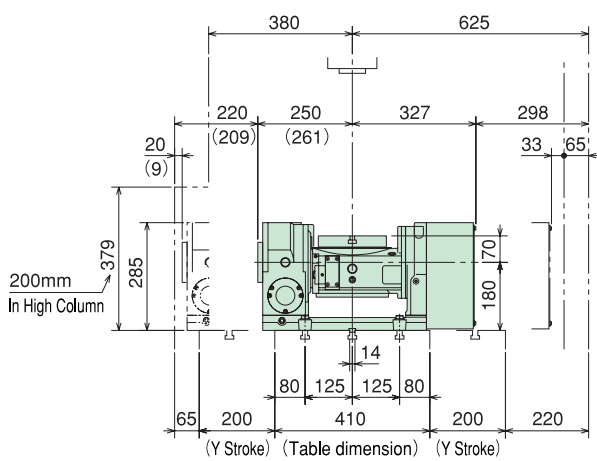
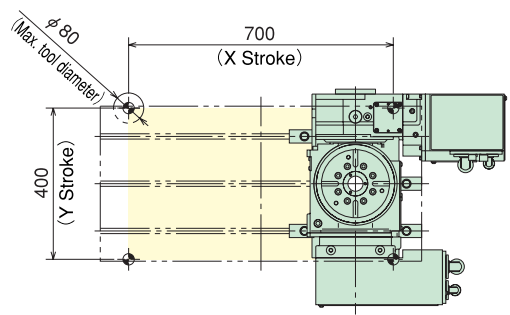
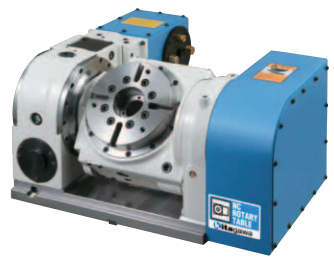


Y axis stroke limitation would be required when moving with full stroke.



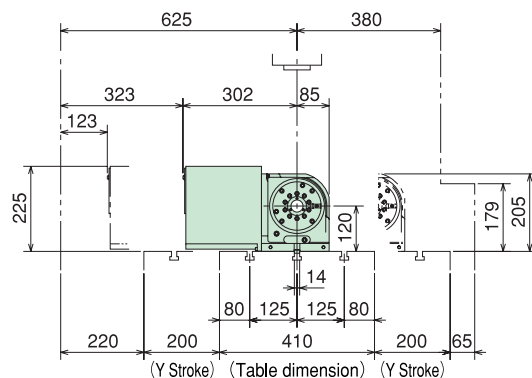
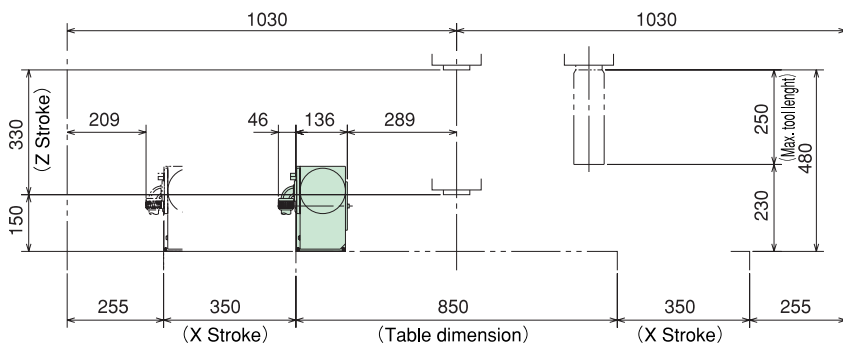
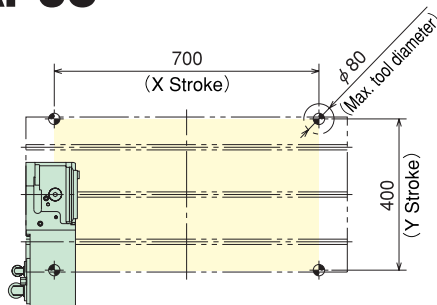
Dimensions in () show TT140BFRXX (Built-in Rotary Joint)

TT182BF-01/TT182BFR01 【200mm High Column】

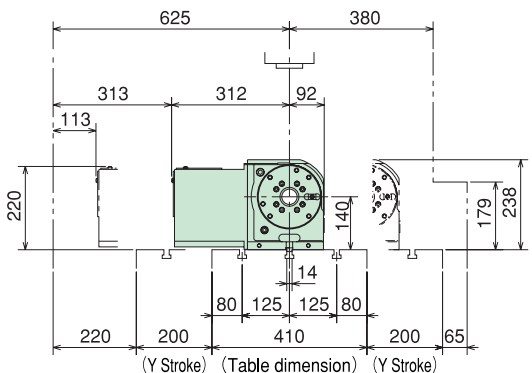
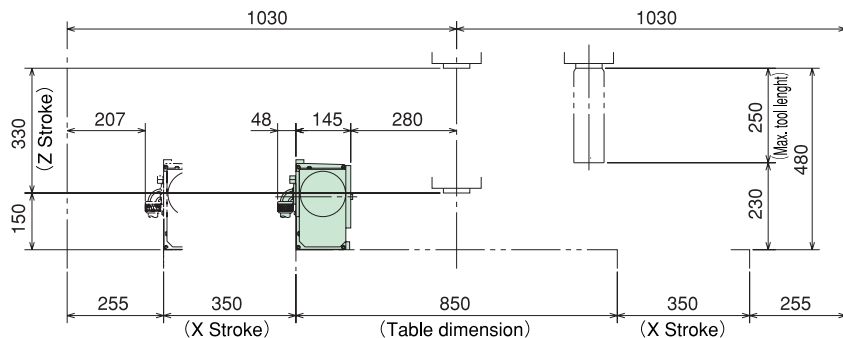
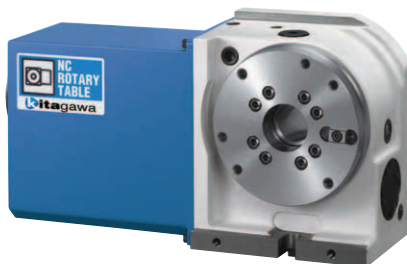
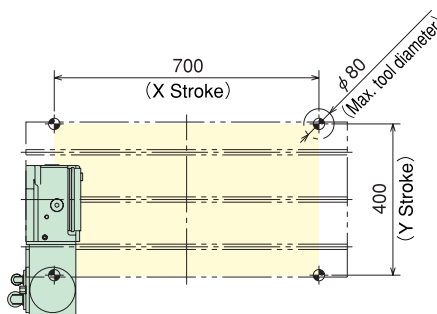


Dimensions in () show TT182BFRXX (Built-in Rotary Joint)

MR120LAF03



MR160LAF04

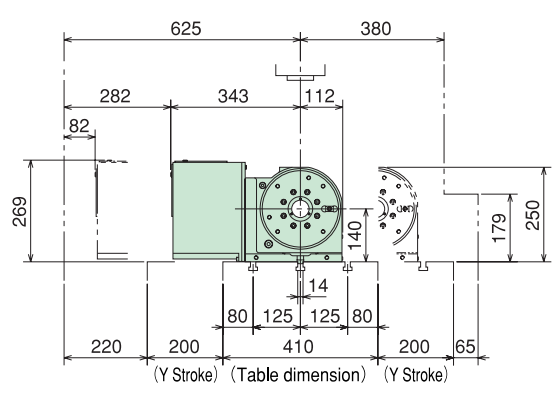
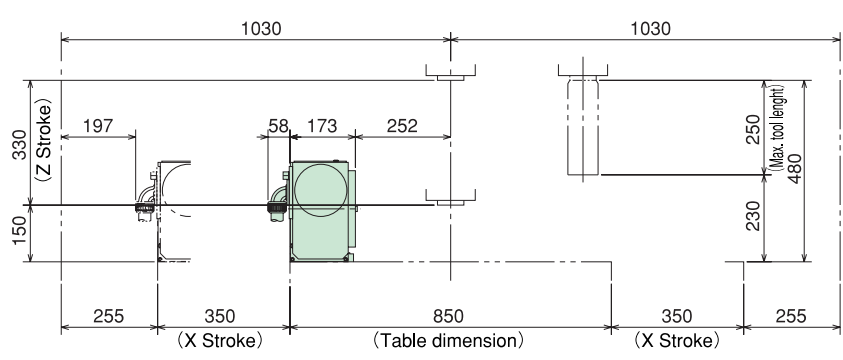
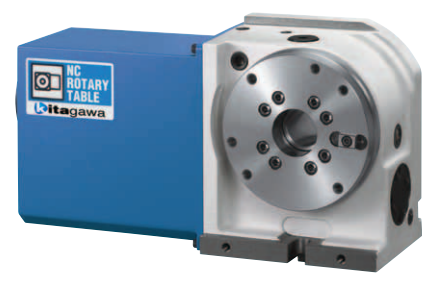
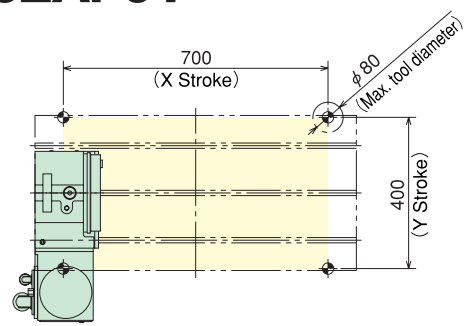




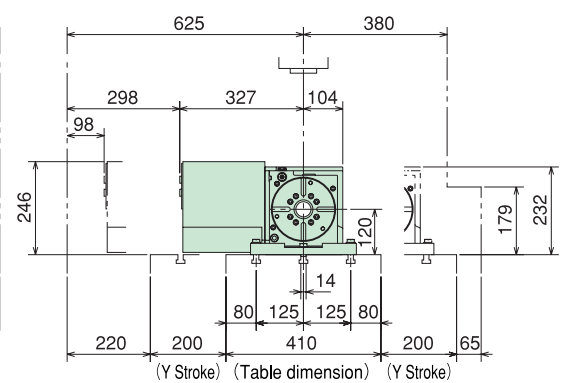
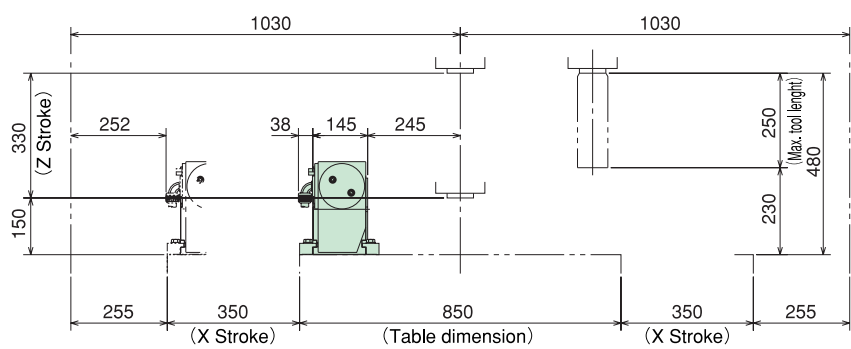
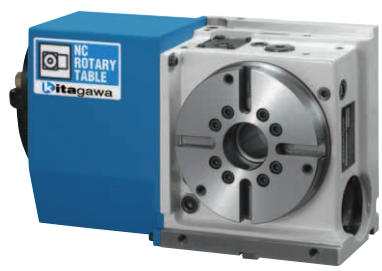
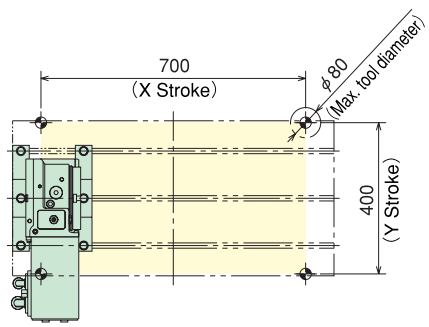
FANUC ROBODRILL α -D14LiA/D21LiA



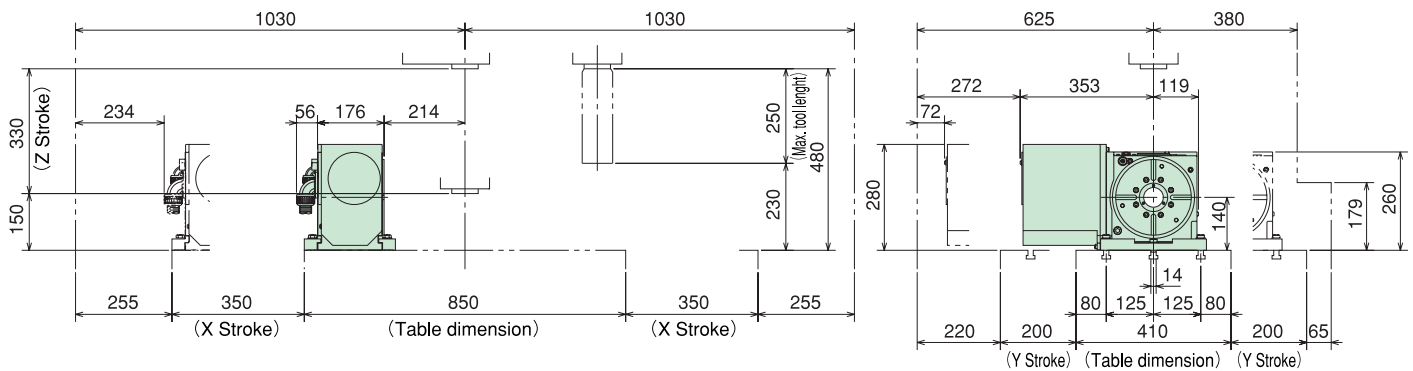
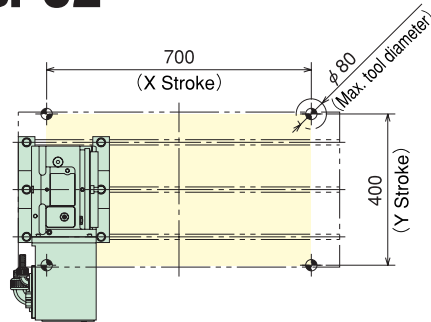
MR200LAF01



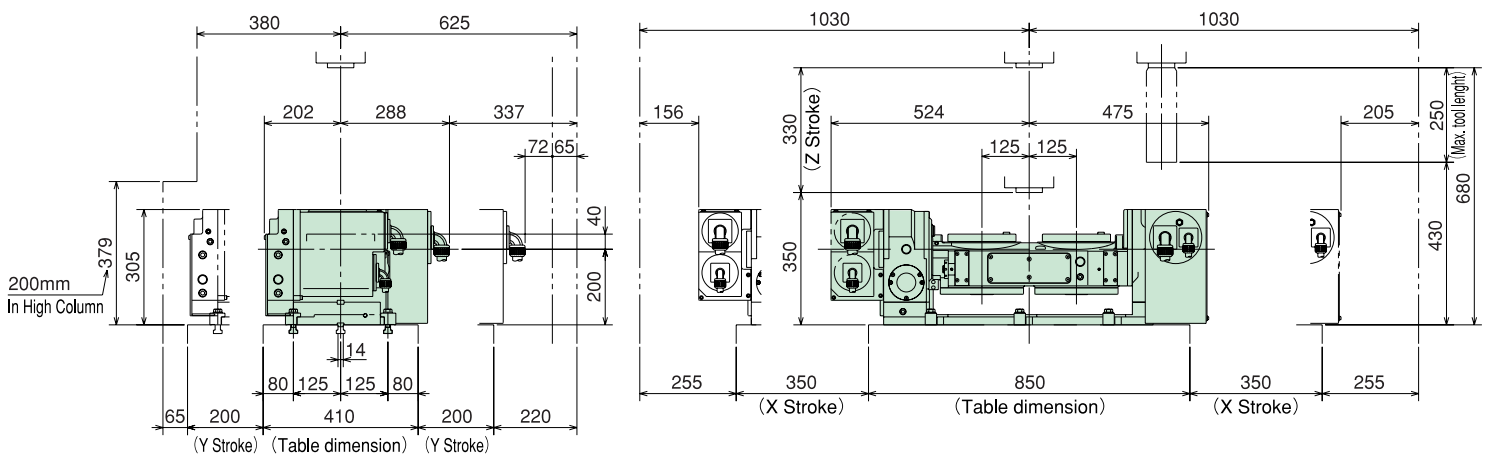
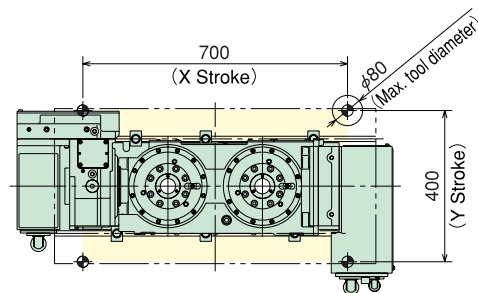
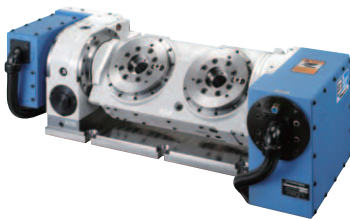
THX160BF07

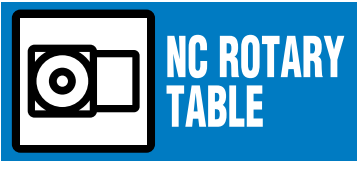


THX200BF02



TW2180B-F1/TW2180BRF1 [200mm High Column]

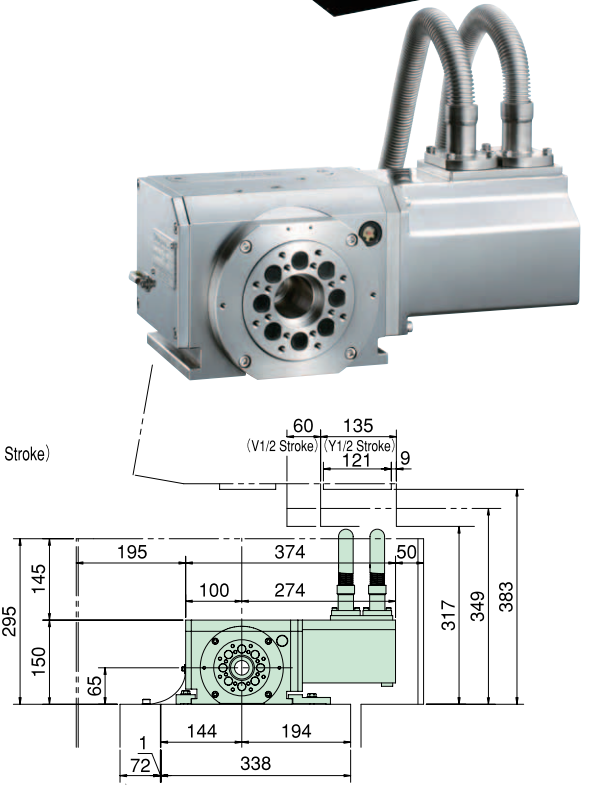
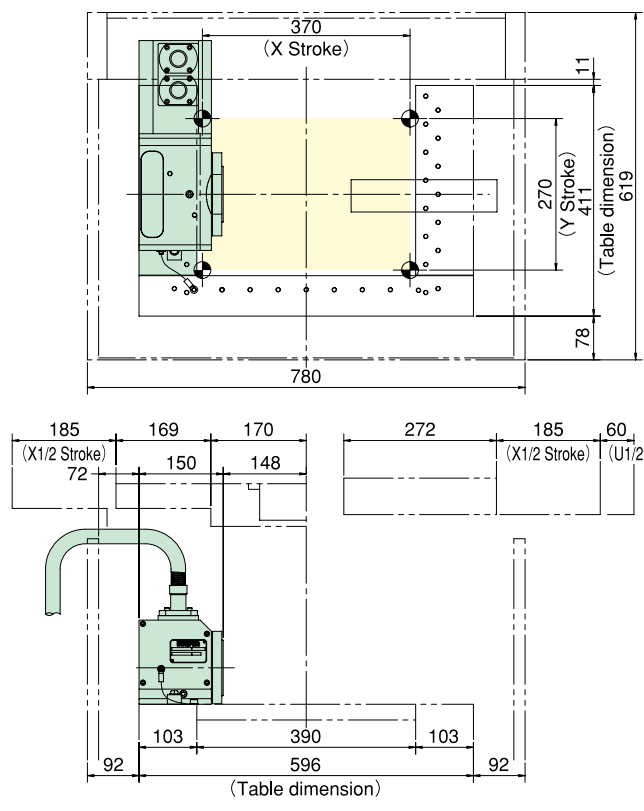




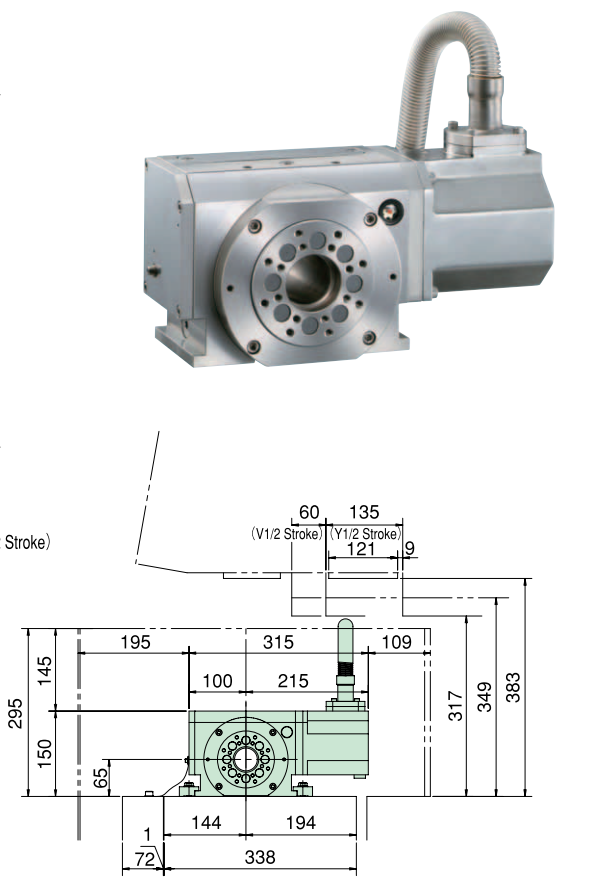
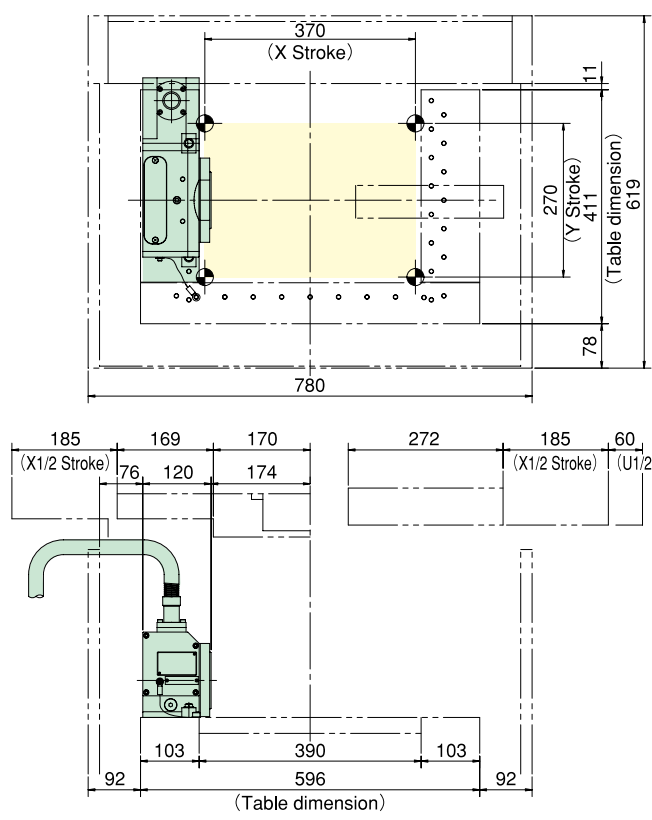
FANUC ROBOCUT α -C400iA

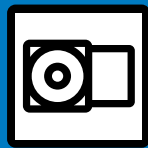


DME100RF02



DM100RF13





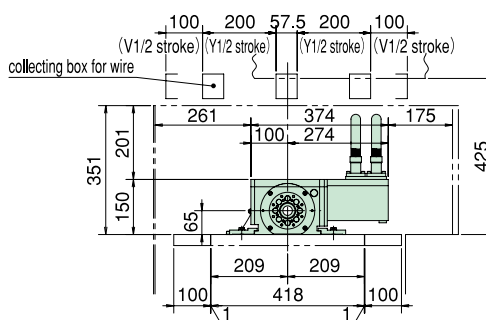
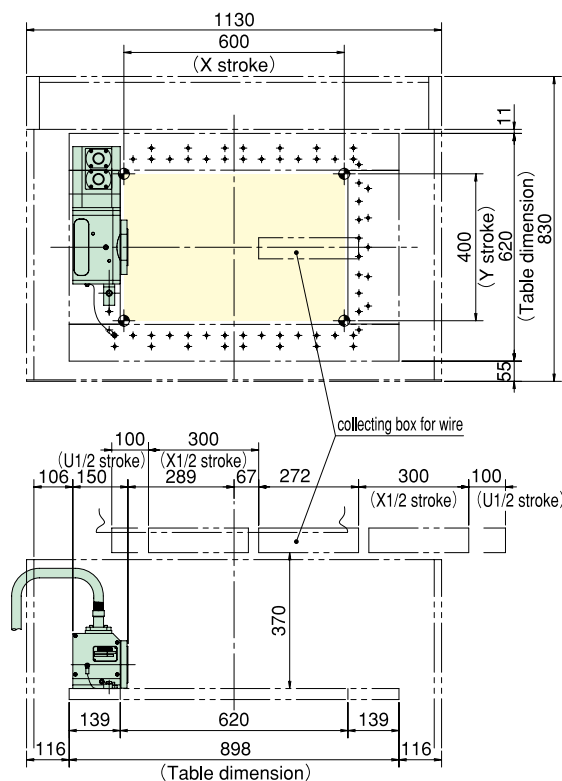
NC ROTARY TABLE

FANUC ROBOCUT α -C600iA

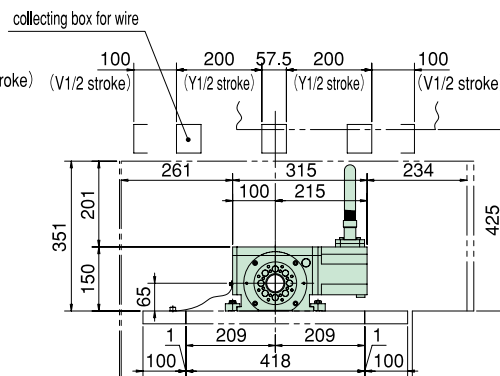
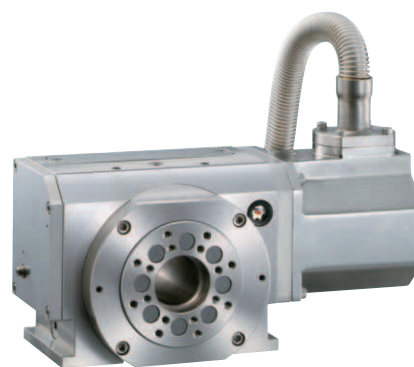
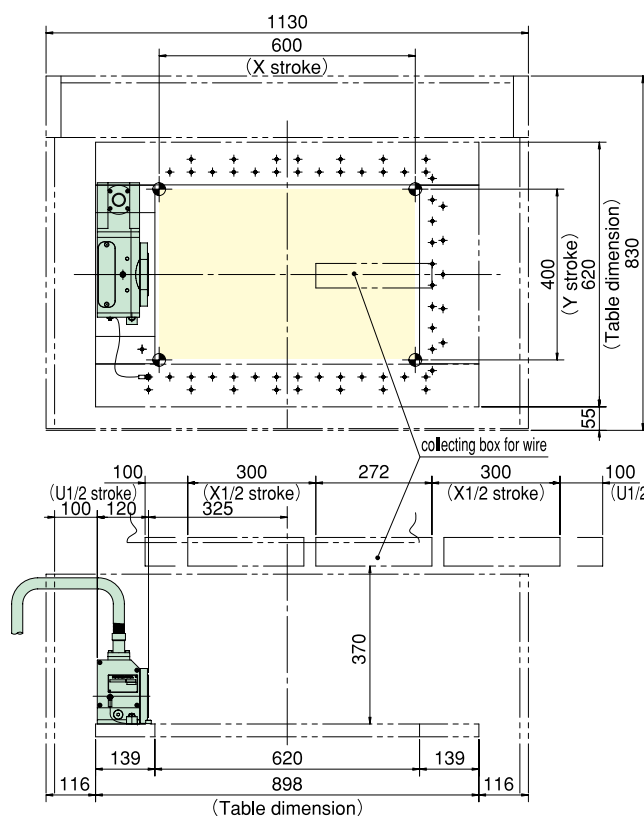


NC ROTARY TABLE

DME100RF02



DM100RF13





Quinte Series QTC100, QTC200, QTC300

New Controller High Quality, Performance and Speed.



[Features]

- **Color LCD enables to show various information.**
As well as current position, high resolution color LCD can show running program, motor information and so on.
- **Easy to input a program.**
In editing program, interactive display screen prevents easy mistakes.
- **Shorten the time of indexing.**
Adopting EtherCAT enables high speed communication and shorten the time of indexing.

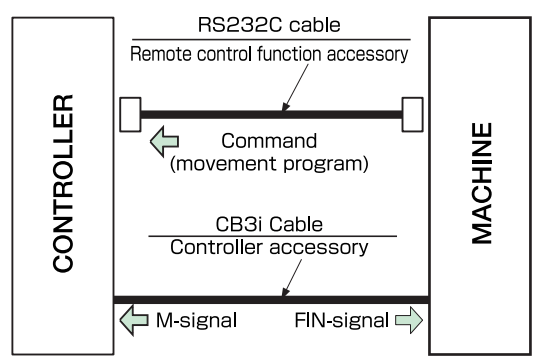
Quinte Series OPTION

■ Remote Control Function

Remote Control Mode

The rotary table is controlled by programming the table movement into the machine's NC program. There is no programming required on the controller.

The movement of the rotary table is controlled by the program on the machine.



NC maker and Required function

NC maker	Required Function (※1)	NC unit type
FANUC	Custom macro B (External output command)	After FSO series After FS11 series

※1 Since the required function may be the option of NC unit, please check that the required function exists to each maker.



Tailstock

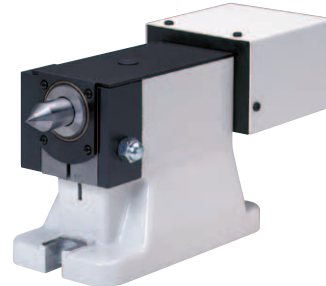
[Manual]

- Clamp handle can be installed on left or right side
- Notch type hand wheel



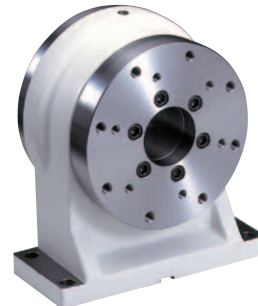
[Pneumatic / Hydraulic]

- Stroke confirmation on cylinder
- Easily exchangeable quill-type centre
- Equipped with a proximity switch for position confirmation



Tail Spindle

- Clamping mechanism spec
(Heavy duty tailstock with Disk clamping)
- Non clamping mechanism spec
- Suitable for supporting many types of jig



Rotary Joint

- Built in rotary joint reduces supply block projection
- External rotary joint allows many ports
- Provides air or hydraulic pressure from the rear of the table to a fixture





Global Network

America Contact

- **KITAGAWA - NORTHTECH INC.**
 Tel. +1 847-310-8787 Fax. +1 847-310-9484
 301 E. Commerce Dr, Schaumburg, IL. 60173 USA
<http://www.kitagawa.com>
- **TECNARA TOOLING SYSTEMS, INC.**
 Tel. +1 562-941-2000 Fax. +1 562-946-0506
 12535 McCann Dr, Santa Fe Springs, California 90670 USA
<http://www.tecnaratools.com>

Europe Contact

- KITAGAWA EUROPE LTD.**
 Tel. +44 1725-514000 Fax. +44 1725-514001
 Unit 1 The Headlands, Downton, Salisbury, Wiltshire SP5 3JJ, United Kingdom
<http://www.kitagawaeurope.com>
- **KITAGAWA EUROPE GmbH**
 Tel. +49 2102-123-78-00 Fax. +49 2102-123-78-69
 Borsigstrasse 3, 40880, Ratingen Germany
<http://www.kitagawaeurope.de>
- KITAGAWA EUROPE GmbH Poland Office**
 Tel. +48 607-39-8855 Fax. +48 32-749-5918
 44-240 Zory, ul. Niepodleglosci 3 Poland
<http://www.kitagawaeurope.de>
- KITAGAWA EUROPE GmbH Czech Office**
 Tel. +420 603-856-122 Fax. +420 549-273-246
 Lysicka 3, 621 00 Brno, Czech Republic
<http://www.kitagawaeurope.de>

Asia Contact

- KITAGAWA INDIA PVT LTD.**
 Tel. +91 20-6500-5981 Fax. +91 20-2615-0588
 Lotus House East, Lane 'E' North Main Road, Koregaon Park, Pune 411 001, Maharashtra, India
- **KITAGAWA (THAILAND) CO.,LTD. Bangkok Office**
 Tel. +66 2-712-7479 Fax. +66 2-712-7481
 9th FL, Home Place Office Building, 283/43 Sukhumvit 55Rd. (Thonglor 13),Klongton-Nua, Wattana, Bangkok 10110, Thailand
- **KITAGAWA IRON WORKS CO.,LTD. Singapore Branch**
 Tel. +65 6838-4318 Fax. +65 6408-3935
 #02-01 One Fullerton, 1 Fullerton Road, Singapore 049213
- **KITAGAWA IRON WORKS (SHANGHAI) CO.,LTD.**
 Tel. +86 21-6295-5772 Fax. +86 21-6295-5792
 Room308 3F Building B. Far East International Plaza,No.317 Xian Xia Road,Chang Ning, Shanghai,200051China
- **DEAMARK LIMITED**
 Tel. +886 2-2393-1221 Fax. +886 2-2395-1231
 No. 6, Lane 5, Lin Sen North Road, Taipei, Taiwan
<http://www.deamark.com.tw>
- **KITAGAWA KOREA AGENT CO.,LTD.**
 Tel. +82 2-2026-2222 Fax. +82 2-2026-2113
 803 Ho, B-Dong, Woolim Lion's Valley, 371-28 Gasan-Dong,Gumcheon-Cu, Seoul, Korea
<http://www.kitagawa.co.kr>

Oceania Contact

- DIMAC TOOLING PTY.LTD.**
 Tel. +61 3-9561-6155 Fax. +61 3-9561-6705
 61-65 Geddes Street, Mulgrave, Victoria, 3170 Australia
<http://www.dimac.com.au>

● Japanese speaker available

kitagawa <http://www.mta.kiw.co.jp>

KITAGAWA IRON WORKS CO., LTD.

77-1 Motomachi, Fuchu-shi, Hiroshima-pref. 726-8610, Japan
 Tel. +81 847-40-0526 Fax. +81 847-45-8911

- Specifications and outside appearance are subject to change without notice due to ongoing research and development.
- The color of the actual product may be different from the catalogue's due to printing matters.
- Catalogue contents as of 2014.7
- The products herein are controlled under Japanese Foreign Exchange and Foreign Trade Control Act. In the event of importing and/or exporting the products, you are obliged to consult KITAGAWA as well as your government for the related regulation prior to any transaction.