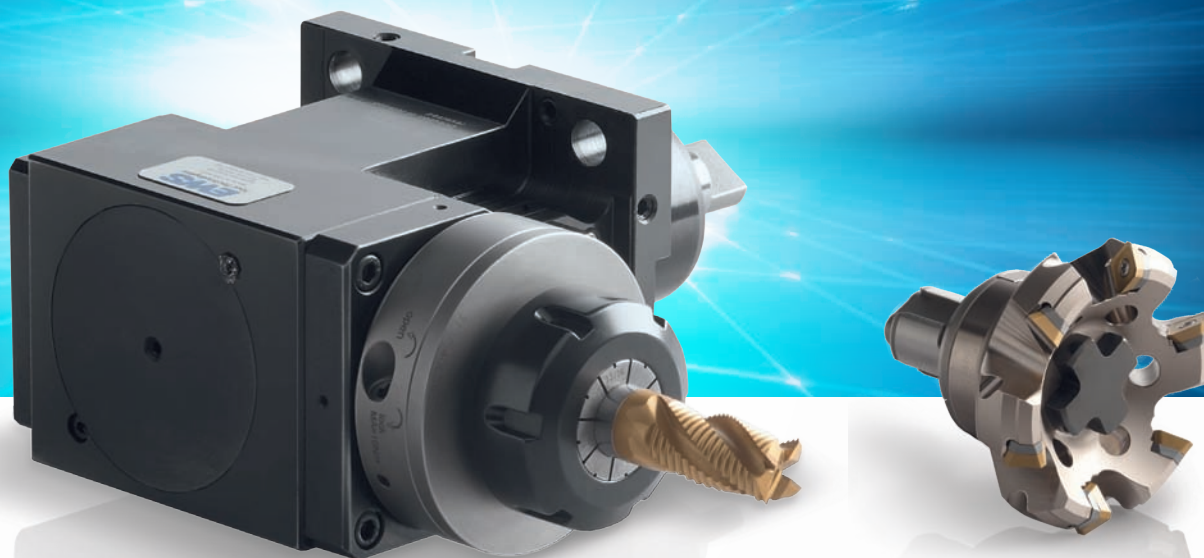


**Precision meets Motion**



**Tool change in only  
20 seconds**

## **Manual**

***EWS . Varia VX3 and VX4***

(applied for a patent)

**EWS**  
Tool Technologies

#### 1. Clamping the Varia insert in the tool



Make sure that the clamping ring is completely opened. Therefore turn the clamping screw anti-clockwise slightly until it stops.

Clean the interface with a cloth (do not use compressed air) and assemble the insert into the tool until it is plane. This is possible in 3 positions, respectively shifted by 120°.



Clamp the insert by turning off the Varia screw (1) clockwise and tighten it with **6Nm**.

**Please note that an higher torque will lead to damage.**



EWS Varia system guarantees plane tightening. Please check this through visual inspection.

The tool is now ready for operation.



To not damage the inserts only set up the collet chucks and milling arbors in the assembly jig MB-VX3 and MB-VX4 depending on the size. (see accessories)

## EWS . Varia VX3/VX4

### Manual

#### 2. Removing the Varia insert out of the tool



Open the clamping ring by turning the Varia screw (1) anti-clockwise. The integrated mechanical expulsion system pushes the insert from the plane face. Turn the screw slightly against the stop.



Now you can remove the insert. Inject insert and tool after the cleaning with an oil (corrosion prevention).



The tool is now ready for the next operation.

### 3. Accessories

#### 3.1. Assembly blocks



Universal assembly block: UMB100

Changeable tool adaptor

- EWS Varia VX3: MW-VX3
- EWS Varia VX4: MW-VX4

Changeable adaptors are also available in different forms.



**EWS Varia assembly block**

- EWS Varia VX3: MB-VX3
- EWS Varia VX4: MB-VX4



**Torque wrench**

- Article No. DSV SW5/05.7NM

*Picture may differ from original product*

**EWS . Varia VX3/VX4**

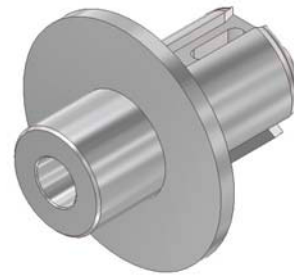
**Manual**

**3.2. Varia inserts**

**Collet chuck**



**Morse taper adaptor**



**Weldon / whistle notch insert**



**Floating toolholder collet chuck**



**Millering insert**



**Hydrodehn insert**





### **EWS Weigele GmbH & Co. KG**

Maybachstraße 1 · D-73066 Uhingen  
Telefon +49(0)7161-93040-100  
Telefax +49(0)7161-93040-30  
E-Mail: [info@ews-tools.de](mailto:info@ews-tools.de)  
[www.ews-tools.de](http://www.ews-tools.de)

### **WSW Spannwerkzeuge-Vertriebs GmbH**

Maybachstr. 1 · D-73066 Uhingen  
Telefon +49(0)7161-93040-100  
Telefax +49(0)7161-93040-30  
E-Mail: [info@wsw-collets.de](mailto:info@wsw-collets.de)  
[www.wsw-collets.de](http://www.wsw-collets.de)

### **Command Tooling Systems**

13931 Sunfish Lake Blvd NW  
Ramsey · MN 55303 USA  
Telefon +1-763-576-6910  
Telefax +1-763-576-6911  
[support@commandtool.com](mailto:support@commandtool.com)  
[www.commandtool.com](http://www.commandtool.com)

### **EWS Korea Co. Ltd.**

60-11 · Woongnam-Dong  
Changwon  
Kyoung-Nam Korea  
Telefon +82 55-267-8085  
Telefax +82 55-262-3118  
E-Mail: [info@ewskorea.co.kr](mailto:info@ewskorea.co.kr)  
[www.ewskorea.co.kr](http://www.ewskorea.co.kr)

### **EWS Ltd.**

Krassnaja str., 38  
600015 Vladimir  
Russland  
Telefon +7-4922-541160  
Telefax +7-4922-541160  
E-Mail: [info@ews-russland.ru](mailto:info@ews-russland.ru)  
[www.ews-russland.ru](http://www.ews-russland.ru)

