

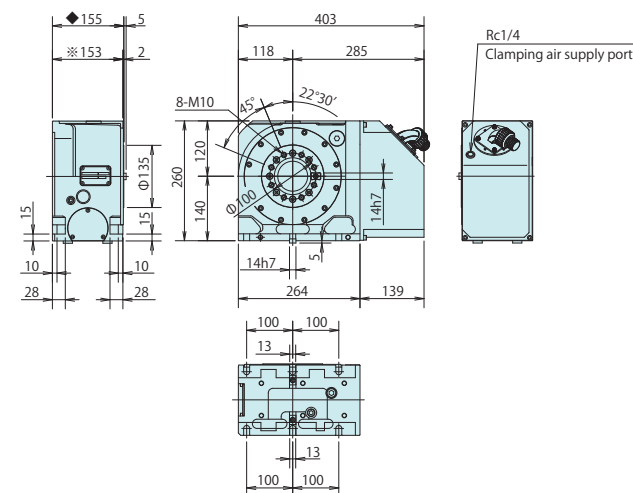
## Specifications

Model	Table diameter mm	Registered diameter of table mm	Spindle through hole diameter mm	Centre height mm	Clamping method	Clamping torque N·m	Motor axis reduced inertia kg·m <sup>2</sup>	Servo motor for FANUC spec.	Gear ratio
MK200R	φ 135	φ 65H7	φ 70	140	Pneumatic	570	0.00010	α iF4/5000	1/90
Max. spindle speed (Motor: 3000min <sup>-1</sup> ) min <sup>-1</sup>	Allowable work inertia kg·m <sup>2</sup>	Indexing accuracy sec	Repeatability sec	Mass of product	Allowable load Horizontal kg	Allowable load Vertical kg	Allowable cutting torque N·m	Built-in rotary joint (Option)	
33.3	1	20	4	58	200	100	270	Hydraulic/Pneumatic 6 ports + 1 port*	

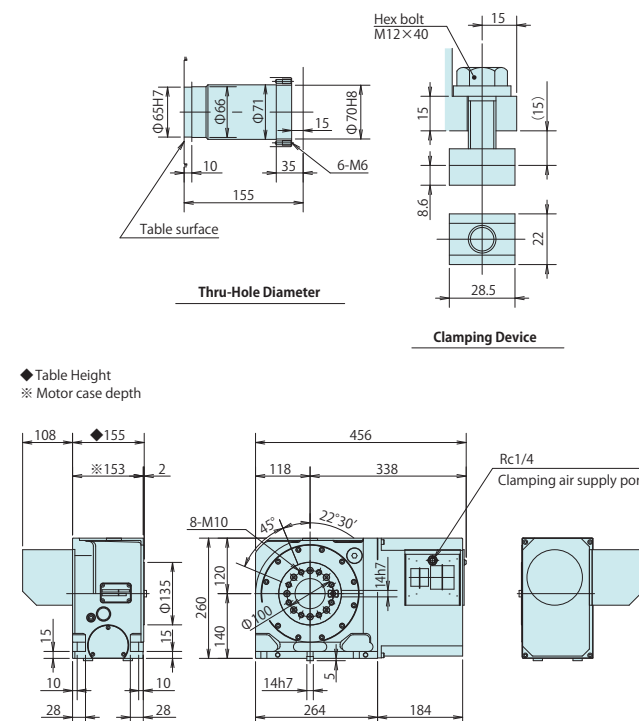
※ 1 port is φ 12.5 multi purpose hole.

## Dimensions

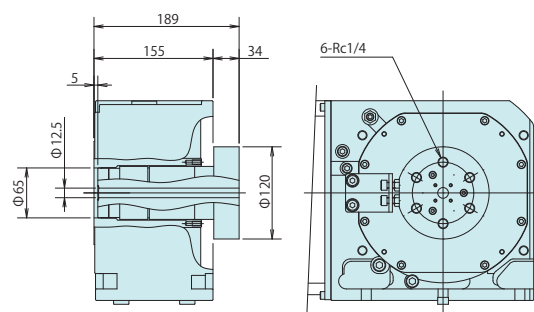
◆ Table Height  
※ Motor case depth



M signal spec.

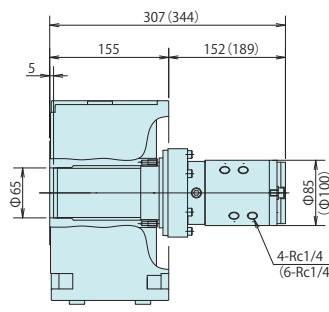


4th axis spec.



Built-in 6-port rotary joint

External dimensions of 4-port and 5-port rotary joints are the same as this.



High-pressure 4-port rotary joint

Dimensions in ( ) are for 6-port rotary joint.

**COBOTEC 20**  
ENGINEERING de experienta

0213221238

office@cobotec.ro

www.cobotec.ro

CATTED Business Park Chitila -  
Hala 11 Soseaua Centura  
Bucuresti, Km 62 Chitila Jud Ilfov  
Cod Postal 077045

**kitagawa**

Kitagawa Corporation Kitagawa Global hand Company

77-1 Motomachi, Fuchu-shi, Hiroshima-pref. 726-8610, Japan Tel. +81 847-40-0561 Fax. +81 847-45-8911

- Specifications and outside appearance are subject to change without notice due to ongoing research and development.
- The color of the actual product may be different from the catalogue's due to printing matters.
- Catalogue contents as of 2018.5
- The products herein are controlled under Japanese Foreign Exchange and Foreign Trade Control Act. In the event of importing and/or exporting the products, You are obliged to consult KITAGAWA as well as your government for the related regulation prior to any transaction.

FNO.1/Printed in Japan 2018.5.2000



**kitagawa**

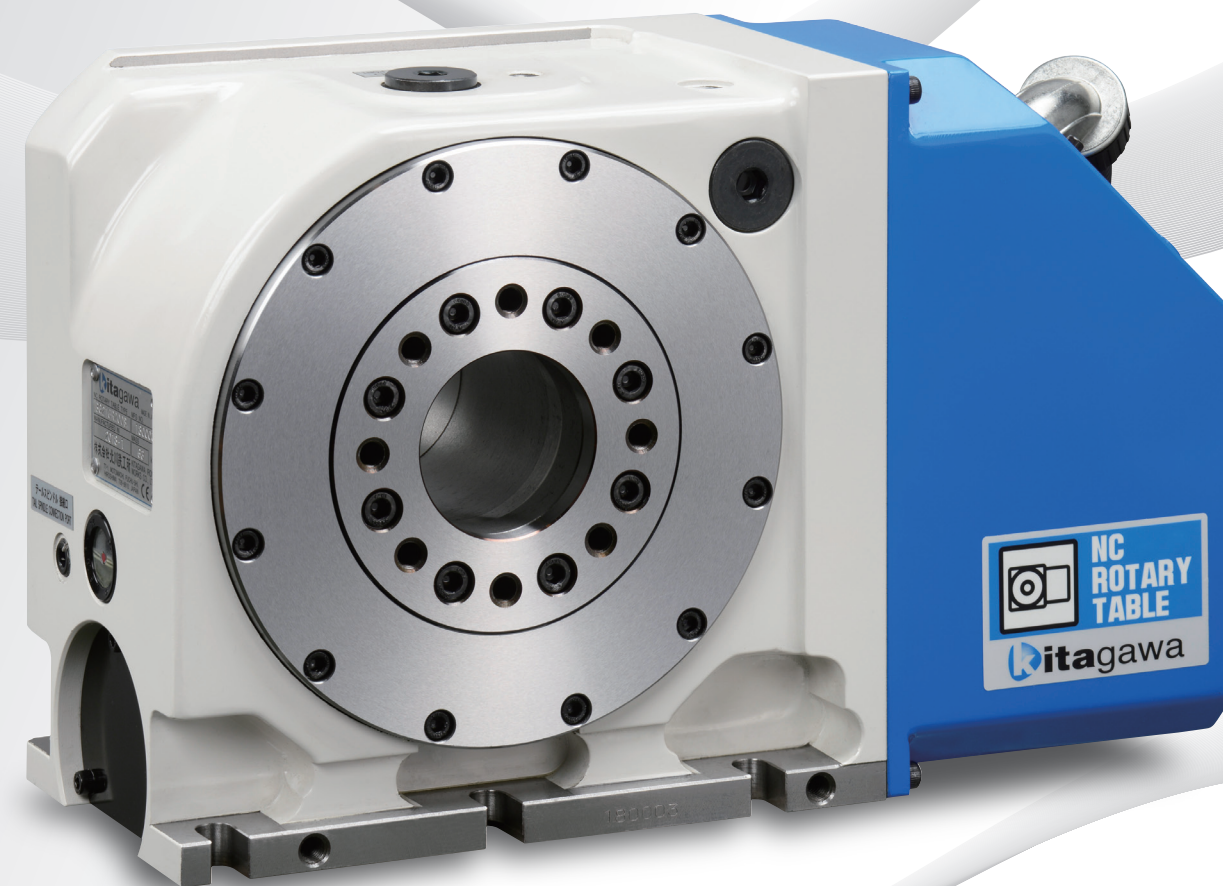
**NEW**

Strong & Compact NC Rotary Table

# MK200

Performance improved

Improved mounting



Wide selection of rotary joints



## The Kitagawa's latest compact NC rotary table MK series has arrived. High-performance and easy-to use model.

### Performance improved

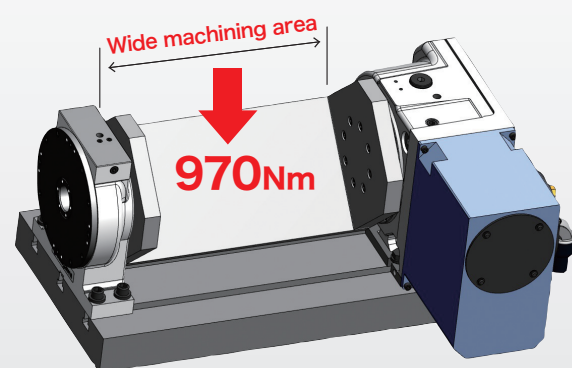
#### Powerful clamping torque

◎ Large capacity provides the highest specifications in it's class

**Clamping torque: 570Nm**

(163% compared to our products in case of MK200)

Jig space and clamping torque are boosted by the design of the MK200 and our thin tail spindle.

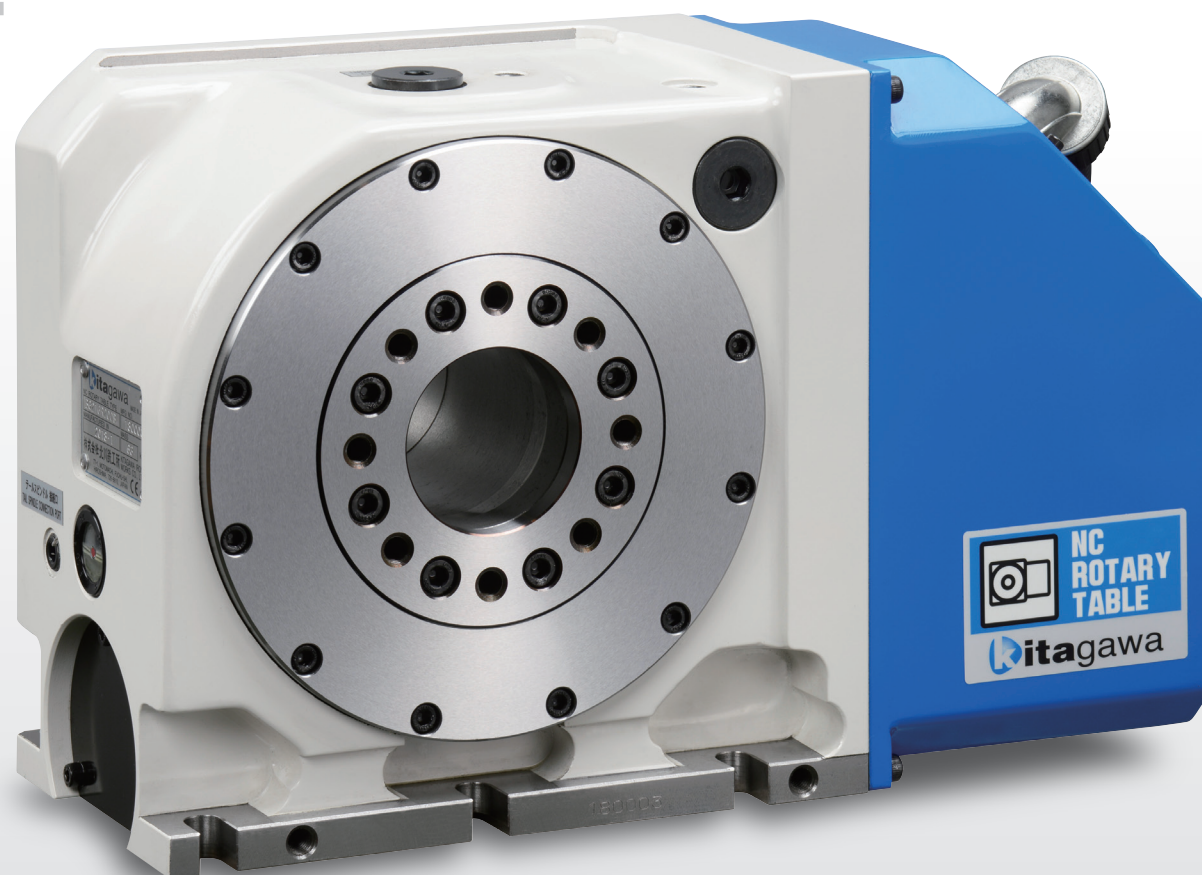
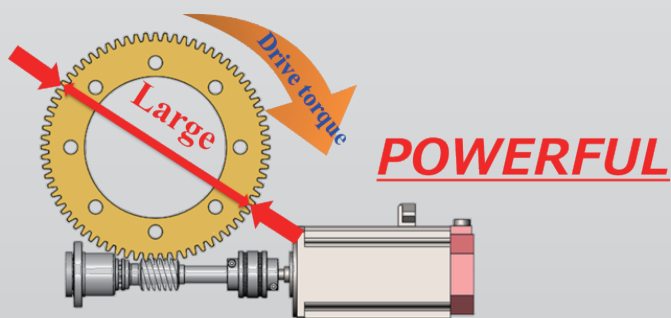


NC rotary table MK200 + Tail spindle TSRC140  
=Total clamping torque

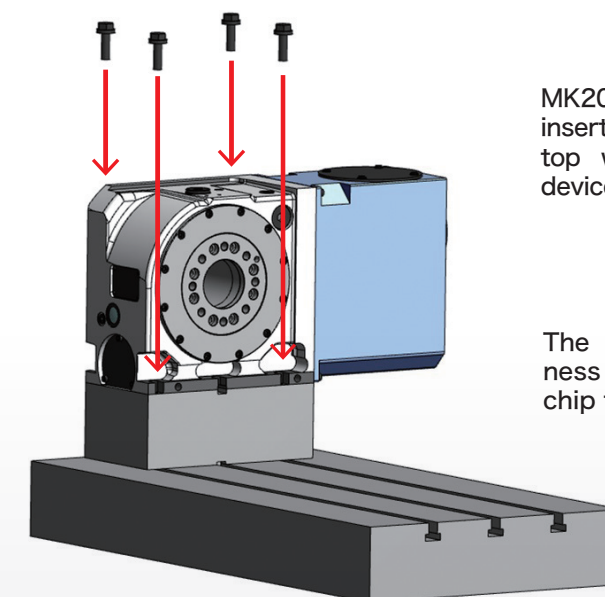
**570Nm + 400Nm = 970Nm**

#### High cutting torque

◎ Large worm wheel design allows powerful lead cutting.



### Improved mounting



MK200 is installed by inserting bolts from the top without clamping devices.

The effective thickness is reduced and chip flow is improved.

MK series rotary table

The locator on riser block helps retain locating accuracy and assists with maintenance.

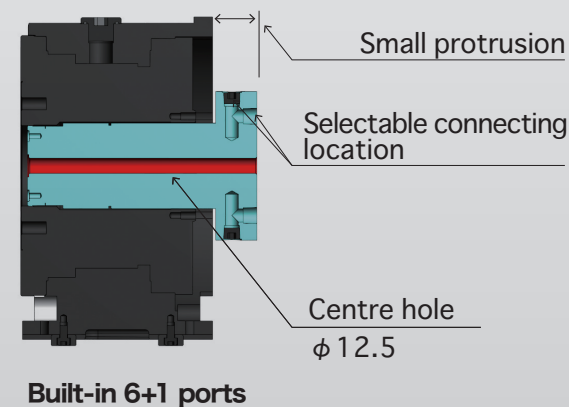
Locator

Riser block

### Wide selection of rotary joints

◎ Compact built-in rotary joints can be selected from 4-, 5- and (6+1)-port types. The centre port of (6+1)-port type has a  $\phi 12.5$ mm multi-purpose hole for high-pressure coolant, work seating detection sensor, etc.

◎ 25MPa high-pressure rotary joints (4-port or 6-port) are also available for miniaturization of fixtures and fast actuation.



**Built-in rotary joint (7MPa)**

**High pressure rotary joint (25MPa)**

